

PANEL, WOOD & *Solid Surface*

Issue No. 187/188

December 2023/January 2024

The latest from SCM on beam saws

Turn to page 32-33 for the full story



Awards: pp 3-6 ● News: pp 7-17 ● Exhibitions: pp 18-20
Software: p 20-23 ● Sustainable Development: pp 24-30
Panels & Panel Processing: p 31-38

YOUR PERFECT PARTNER



design with added dimension

**bonded to the
substrate of choice**

The dp-limitless **Textured** Collection is a range of creative and functional textured polymer surfaces. They can be worked easily with common woodworking tools and machinery and can be recoated with acrylic, polyurethane and water based varnishes. **Available in quantities from as little as just one board.**

Contact us for more information.

Century House, Premier Way, Lowfields Business Park,
Elland, West Yorkshire, HX5 9HF

T: +44 (0) 1484 658341 E: info@decorativepanels.co.uk
www.decorativepanels.co.uk

Historic Houses announces Restoration Award 2023 Winner

THE PRESTIGIOUS Historic Houses Restoration Award 2023, sponsored by Sotheby's auction house, was created in 2008, and recognises outstanding examples of the work being carried out by private owners all the time, up and down the country, to protect and preserve the historic buildings in their care. This year's winner, Brockfield Hall, is a brick country house only six miles from York. It was bought in 1951 by Lord Martin Fitzalan Howard and it is now the family home of his grandson, Charlie Wood, and his wife, Hatta Byng.



Brockfield Hall

Charlie and Hatta carried out a programme of restoration over a period of eighteen months, beginning in late 2020. Working with Rupert Cunningham of Ben Pentreath, they removed twentieth century interventions, restored the original form and features of rooms throughout the house, restored plasterwork, completely redecorated, replaced all services, installed a sustainable heating system, and introduced bathrooms and a new kitchen.

The hall was built in 1804 by Benjamin Agar to the design of Peter Atkinson, junior partner of John Carr. Throughout the restoration project, the key aim for Charlie and Hatta was to ensure the survival of the house for future generations, whilst remaining faithful to Agar and Atkinson's original vision for the house: a statement for the Vale of York and a family home.

Whilst they have undertaken considerable interventions and redecoration, they wanted it to be impossible to distinguish the old from the new. The decoration is designed to play second fiddle to the house and provide a sympathetic backdrop to the house's contents. Changes include the re-opening of blocked up doorways between the drawing room and main reception rooms, to reinstate Atkinson's original flow between these rooms.

Materials were repurposed throughout — be they bathroom fittings, the stone, or oak doors. Elsewhere, they reclaimed materials such as Provencale tiles for the boot room, pine floorboards from Yorkshire, and Delft tiles in the kitchen. The end result is remarkable.

Charlie and Hatta, owners of Brockfield Hall, said: "Working with the brilliant Rupert Cunningham from Ben Pentreath, the goals for our restoration of Brockfield were always twofold: to restore the house back to Benjamin Agar's and Peter Atkinson's original vision and their design of the early Regency period, and to create a family home for the 21st century, securing both goals for future generations. We loved doing it and we're delighted that the judges have recognised the ambition and the execution!"

Ben Cowell, Director General at Historic Houses, said: "The restoration that has been carried out at Brockfield is simply exquisite. The judges were unanimous that it should be awarded the 2023 Historic Houses Restoration Award, to recognise brilliance in giving a Georgian home a vibrant new lease of life. The mastery of the interventions are such that it is difficult to see where the 18th century ends and the 21st century begins. Yet this is truly now a house that is fit for modern living while remaining resolutely true to its special historic character. Well done to all involved!"

Historic Houses ● www.historichouses.org

Panel, Wood & Solid Surface

is published by

Pawprint Publishing Ltd

121 Warren Drive
Hornchurch
Essex RM12 4QU

Tel 07913 783510

email info@pawprintuk.co.uk
www.pawprintuk.co.uk

© Pawprint Publishing Ltd

All rights reserved. No part of this publication may be reproduced, stored in a retrieval system, or transmitted in any form by any means electronic, mechanical, photocopying, recording or otherwise without the prior consent of Pawprint Publishing Ltd.

This journal includes editorial photographs provided and paid for by suppliers.

GERRY LYNCH WOODWORKING MACHINERY



Mainly Used Machinery for Solid Wood and Panel Production
OVER 60 YEARS OF WOODWORKING MACHINERY

Presented by:

GERRY LYNCH

MOBILE: + 44 (0) 7860 359382

E-MAIL: gerry.lynych@talk21.com

OFFICE: 91 THE OLD MEADOW, SHREWSBURY, SY2 6AB, UK



Wood Awards: Gold Award winner



A MULTIFAITH community complex, designed by James Gorst Architects for White Eagle Lodge, was announced as the UK's best new timber building, having won the Gold Award at the Wood Awards evening held in November 2023.

The New Temple Complex, located in Hampshire, is a triumph of sustainable design. Through a celebration of the natural materiality deeply embedded in the area's local history, New Temple Complex is forward looking, yet characterised by peaceful simplicity and serenity.

Open to the public, the building comprises of orthogonal, timber framed pavilions, connected by a cloistered walkway, while facing onto a central courtyard garden. Within the complex exists a temple, library, chapels, a multi-use community hall, public foyer, and catering kitchen.

Designed to welcome visitors from all faiths and corners of the world, New Temple Complex takes inspiration from the sixteenth century Sikh Golden Temple in Amritsar, featuring a square plan with entrances on each of the cardinal points.

An ancient pathway known as The Shipwright's Way runs beside the site, passing clay beds and chalk streams, following a Tudor pathway used to transport timber from ancient oak forests to the shipbuilding city of Portsmouth. The building makes use of each of these materials, including ash from the nearby New Forest.

Between engineered timber frames manufactured offsite, facing clay brickwork set within chalk lime mortar, and reuse of the concrete from the previous building's foundations, the New Temple Complex is a triumph of sustainable design that evokes quiet contemplation and a spiritual connection to the landscape.

Heating is provided by a ground source heat pump, buried in the landscape and powered from a photovoltaic panel array located on site, while an innovative raised floor slab provides passive cooling to the internal spaces with fresh air supplied by an underground labyrinth ventilation system.

New Temple Complex was built by Beard Construction with joinery

from Kingsdown Joinery, and the assistance of Quantity Surveyors Jackson Coles. The wood supplier was English Woodlands Timber, while the structural frame was provided by Pacegrade.

Jim Greaves, principal of Hopkins Architects and lead Buildings judge, said: "On approach, the New Temple Complex is a beautiful composition of material and colour.

"It is a remarkable example of great architecture with so many layers, within which timber is used exceptionally well — all with meticulous finishes. The glulam domed roof is effortlessly elegant, while the connection to nature is continually considered."

The Wood Awards building judges, a team of world-leading professionals led by Jim Greaves of Hopkins Architects, visited all 20 buildings shortlisted in the Wood Awards before deciding the winner, in one of the UK's most rigorous assessments for any competition.

New Temple Complex beat more than 150 buildings in the UK to claim the Gold Award. It is also the winner of the Education and Public Sector category.

David Hopkins, CEO of Timber Development UK (organisers of the Wood Awards) said: "Congratulations to all the entrants in this year's Wood Awards, especially the team behind New Temple Complex.

"At Timber Development UK, we spend a lot of time campaigning, promoting and educating about the role of timber in decarbonising construction, but there is no substitute for showing such wonderful live examples in practice.

"All of the winners and the shortlisted projects show the crème de la crème of British architecture and design. They show what can be achieved in terms of carbon reduction and design, with no need for compromise, when using timber as the main structural material. We hope this year's entrants will inspire more designers to work with wood as their primary material and look forward to seeing more entries come forward next year."

Wood Awards ● www.woodawards.com

East London timber home is a winner at the Wood Awards 2023



SPRUCE HOUSE & Studio, designed by ao-ft, is the UK's best new timber home, having won the top prize for the Private category at this year's Wood Awards.

This newly built East London home and self-contained garden studio celebrates the beauty and sustainable nature of cross-laminated timber (CLT), which is used for both structure and interior finishing, to breathe new life into an otherwise constrained urban environment.

Within this infill site in Walthamstow, generous open spaces have been able to rise through a narrow Victorian footprint, through careful, considered designs. The primary structure uses custom-milled, prefabricated CLT panels, lifted into place, while built-in timber joinery creates seamless uncluttered interiors.

With a lowered ground floor and clear views into the surrounding area, the designers create a strong connection to the garden where a studio is constructed using the same principles as the house.

Referencing the area's historic origins as a village high street, a front façade of full-width glazing, broken down by full height glulam mullions, creates a contemporary interpretation of nearby Victorian shop fronts. Daylight enters through privacy screens made from Siberian larch, which add beauty and contrast to the façade.

Through a functional and efficient design, the architects sought to minimise carbon emissions at every stage of construction, from fabri-

cation through to finishing. Off-site manufacturing was used to reduce waste, while the shell of the house and kit of parts staircase were designed for ease of disassembly.

Spruce House & Studio was designed with the support of structural engineers Entuitive and installed by PSS London, with timber supplied by KonstruktCLT and cladding from Russwood.

Jim Greaves of Hopkins Architects, the lead building judge, said: "This simple but rigorous plan has been resolved with incredible precision. Carefully integrated joinery, considered detailing and the gentle filtering of natural light create an overall calm, monastic feel to the space."

The Wood Awards building judges, a team of world-leading professionals led by Jim Greaves of Hopkins Architects, visited all 20 buildings shortlisted in the Wood Awards before deciding the winners, in one of the UK's most rigorous assessments for any competition.

This year's best new timber building announced as New Temple Complex, designed by James Gorst Architects. The likes of The Black & White Building, Dragon Flat, Westminster Hall Roof & Lantern, The Boathouse, Benenden School, Centenary Hall & Music School and Field Station also all won their categories, showcasing the diverse use of timber, from large commercial offices through to intimate private homes.

Wood Awards ● www.woodawards.com

Awards nomination for landscaping centre

LOCATED on Priory Road, Tonbridge,, Parker Building Supplies' landscaping centre has impressed at national awards.

The expansive 5,000 sq feet landscaping area in Tonbridge, that includes numerous separate landscaping areas set within beautifully planted borders with features including water exhibits, as well as a sales office offering extensive samples, is in the running for Hard Landscaping Display of the Year.

The finished design, developed in collaboration with Global Stone, was born from meticulous research and created in response to Kent customers' desires for an immersive experience. It features a mix of materials, products and zoned areas, with aggregates and other heavy build materials cleverly incorporated. All accessories required for a typical landscaping project such as edging, setts, walling, channels, composite decking, vast ranges of decorative aggregate, as well as natural stone, porcelain and cladding are also showcased.

Adam Beck, branch manager at Parker Building Supplies, Tonbridge said: "It is such an impressive set up that we attract landscapers and customers from far and wide. Seeing the application of the vast product ranges in a 'real life' setting is a key draw for customers.

"Gaining this UK recognition shows that hard work, innovation and creativity pay off.

"We will continue to grow and innovate, creating inspiring landscaping displays and

working with leading suppliers, such as Global Stone, to provide quality products with varying price ranges to suit all."

Open to trade and public, the space has been built to provide level access so that it can accommodate those requiring use of a mobility aid. The Builders' Merchants Awards are the longest running industry awards. **Parker Building Supplies ● www.parkerbs.com**



Double winner at the Wood Awards

THE BLACK & White Building is a double winner in the Wood Awards 2023 — with the Waugh Thistleton Architect-designed timber office block taking out both the Commercial and Sustainability categories.

This 17.8 m high mass timber office complex, commissioned by forward thinking developers The Office Group (TOG), stands tall as a leading example of sustainable and innovative design — founded on low-carbon construction, circularity and natural materials; which work for people and planet.

The design of the project was praised by the judges for its deeply considered sustainable agenda, and use of renewable, low-carbon timber as its primary material source through every element of the building.

Although both the building's exterior and interiors are visually beautiful, nothing is purely decorative. Every element of the building serves a purpose, from the timber louvres that envelope the façade, reducing solar gain, to the furniture designed to encourage social connectivity.

By embracing a primary superstructure of beech LVL frame and CLT slabs, the building's embodied carbon is only 410 kgCO₂e/m² (A1-A5) — approximately 37% less than that of a concrete structure of the same size with — 1,014.7 tonnes of CO₂ sequestered in the timber used in this superstructure.

On the building's exterior a solar shading cladding system, made from thermally modified American tulipwood, is cen-

tral to the scheme's passive cooling strategy. The timber fins change in angle as they ascend the building, protecting it from solar radiation, and optimising the flow of natural light and heat into the workspace.

Designed to be durable and resilient, with generous, open workspaces, the building's layout can be easily adapted to meet future demands. Both the superstructure and façade are also designed for disassembly, able to be deconstructed and redeployed in other projects as a kit of parts to extend their lifecycle.

The Black & White Building was built by Parkeray and Mid Group, while the timber frame was built by Hybrid Structures. The wood suppliers were Zueblin, Pollmeier, Raico, and Northland Forest Products with machining for the façade by Vincent Timber and technical support by AHEC. The structural engineers were Eckersley O'Callaghan, with timber engineering provided by Engenuiti.

Jim Greaves of Hopkins Architects, the lead building judge of the Wood Awards, said: "This benchmark project pushes forward the use of timber in office building in the UK. Wood is used structurally and internally in numerous, carefully considered, and well-integrated ways, creating a workspace that is truly pleasurable to be in. Executed with great integrity, resolution and coordination, the Black & White Building is a pioneering achievement of sustainable timber architecture."

Wood Awards
www.woodawards.com



TDUK publishes comprehensive new library of Timber Knowledge Sheets

TIMBER Development UK (TDUK) has just published the first set of its huge new library of Timber Knowledge Sheets — with 50+ now available for download.

The new knowledge sheets introduce and answer common questions about every aspect of working with wood, from the difference between hardwood and softwood, through to acoustic regulations, Eurocode 5 principles, embodied carbon, and sourcing timber sustainably.

Developed with experts from Edinburgh Napier University, and TDUK's unrivalled membership network of supply, manufacture and design professionals, these 50+ knowledge sheets are the first batch of a planned 140 to help support the industry to build better with wood.

TDUK chief executive, David Hopkins says: "Following the merger between the Timber Trade Federation and TRADA last year, we promised to connect the timber supply chain, lead best practice, and accelerate a low-carbon future. Our Timber Knowledge Sheets are another example of us doing exactly that — and represent a big step towards our vision of the UK as a country where timber is the number one material choice for all construction projects. Amidst a climate emergency, changing how we build is crucial — as it represents a major portion of our carbon footprint. The material and design choices we make today will shape the future we have tomorrow.

"Timber is an existing, proven solution to how we construct a low-carbon future, with independent studies showing that methods such as timber frame have up to 20% lower embodied carbon than traditional masonry.[1] Fundamentally, trees absorb carbon, and when turned into long term construction products, can store it for decades if not millennia. Most other materials you find on building sites do the exact opposite — spewing tonnes of carbon into the atmosphere.

"Taking on climate change requires collective action, so a big part of TDUK's mission is to make sure that everyone in the timber supply chain has the opportunity, the tools, and the knowledge to succeed. These sheets, released today, add considerable depth to our online library, which is already the largest, most comprehensive source of timber knowledge in the UK. This will support all to build better with wood."

These new Knowledge Sheets touch on all topics timber, so whether you are an architect, engineer, designer, builder, installer, contractor, or merchant, or any other member of the timber supply chain, you'll find a wealth of information packed within. Between pages, you will find introductions to all kinds of timber components and methods of timber construction — all described in an accessible and easy to understand fashion — from Lightweight Timber Frame Construction to Modern Methods and Offsite Timber Construction.

The Knowledge Sheets also contain plenty of regulatory guidance, 'best practice' information for working on site, as well as practical introductions to working with timber in challenging contexts such as flood-prone areas.

Everything from the day-to-day (such as Loft Conversions or Timber Flooring) to the more specialised (Upgrading Doors for Fire Resistance) is covered, along with all aspects of sustainability — from Carbon Cycle and Storage through to Trees and Timber.

These Timber Knowledge Sheets follow hot on the heels of the recently published Span Tables for C16 and C24 timber, which have already proven incredibly popular.

TDUK members have access to the entire Knowledge Library, which along with these 50+ Timber Knowledge Sheets, includes briefs, case studies, research summaries and more. A further 90 Timber Knowledge Sheets are to be published imminently.

While most Timber Knowledge Sheets are members only, anyone can access and download Timber Sizes & Tolerances, Timber and Embodied Carbon, or Construction Site Timber Best Practice with a free user account.

To get started on your new timber journey, simply go to the website below whether you are just beginning or a seasoned expert. If you work with wood, you already belong.

[1] See www.theccc.org.uk/publication/wood-in-construction-in-the-uk-an-analysis-of-carbon-abatement-potential-biocomposites-centre/

Timber Development UK (TDUK)
www.timberdevelopment.uk



Premier Forest Products strengthens its portfolio with another acquisition

PREMIER Forest Products, a leader in the UK's timber and timber products industry, has announced its latest acquisition with the purchase of a specialist fire door manufacturing business.

Established in 1996 and based in Newport, Paul White Ironmongery, Doors, and Fixings (PWIDF), is a renowned specialist door manufacturer with a strong reputation for precision and quality. The business is based on Langland Way, Newport, just a short distance away from Premier Forest's head office and employs 22 staff.

PWIDF is known locally and nationally for its craftsmanship in manufacturing fully compliant, precision fit fire doors — a growing market. The company also distributes a range of accompanying ironmongery, such as hinges and locks, further enhancing the security and functionality of its products, as well as providing a solutions-based design service for its clients.

Terry Edgell, co-founder and CEO of Premier Forest Products, said: "The acquisition of PWIDF is the perfect fit for Premier Forest Products as we continue to expand our presence in the contract joinery sector, particularly in South Wales, and the team's bespoke fire door offering fits seamlessly alongside our existing timber-based fire protection products. We are confident that this partnership will drive our business forward and close a gap in our current range, further enhancing the product range available to customers.

"All 22 highly skilled PWIDF employees will be retained, ensuring a smooth transition and preserving the expertise and craftsmanship that have made the company successful. These dedicated professionals will play a vital role in driving the business forward and contributing to its continued success."

Paul White, founder of PWIDF and member of the Guild of Ar-

chitectural Ironmongers, said: "I'm extremely proud of the niche we have carved in the highly specialised door market and look forward to growing even further as part of Premier Forest in our new chapter. I believe that our busi-

ness will flourish under the Premier Forest family, and together, we will have the resources and support to take our products to the next level."

Premier Forest Products
<https://premierforest.co.uk/>



Left to right: Paul White and Terry Edgell.

RIBA/J/West Fraser competition winners

PAUL Cashin Architects & Keith Evans Architects' transformation of a department store in Southampton into a secondary school with community learning spaces has won this year's West Fraser SterlingOSB Zero/RIBA/J competition.

As an architect, what do you like about SterlingOSB Zero?

The industrial appearance is interesting; as are the texture, pattern and robust finish. OSB is economical and practical and way more diverting to the eye than the more expensive birch-faced plywood.

Why would you choose SterlingOSB Zero for a project?

The panel is so popular due to its sustainable credentials; it's a renewable material, low in carbon, and boasts an environmental product declaration document. The earthy, rustic, natural look is also a winner!

When specifying materials, is cost a consideration? Do you know the price of different brands of a generic material?

We work with cost consultants and always test material costs of products against others to see what fits best with the budget and meets the client's brief. The third factor we look at, alongside cost and brief, is the carbon footprint of a product.

What type of project would you specify SterlingOSB Zero for?

All types of projects from private and social housing, educational establishments, workplaces, and community projects.



Paul Cashin and Keith Evans.

How important is it, as architect, to use an OSB supplier which is committed to sustainable production and supply?

It is very important that the companies we work with are committed to sustainability. We want to work with professional companies that share our ethos to sustainable design and delivery.

Do you specify by generic types (e.g. OSB) or by brand (e.g. SterlingOSB Zero)?

If we have time, we will specify a product by name or approved equal. We do like to use brands we know obviously.

If you specify a branded product, do you check this is the same product purchased by the contractor?

Yes, the checking process on any job is as important as the specifying stage.

How important are SterlingOSB Zero's environmental credentials to specifiers net zero targets?

Any renewable, low embodied carbon material like SterlingOSB Zero is important in getting a project's embodied carbon figure as low as possible.

Would you recommend SterlingOSB Zero to other architects and if so, why?

Yes, we would because it is renewable, economical, robust and a visually interesting material to use. Also, as it's sourced in the UK its carbon footprint is lower than importing an alternative product from further away.

West Fraser ● 01786 812 921
<https://uk.westfraser.com/>

Makita powers up the heat

IN ADDITION to powering the expanding line-up of cordless tools and accessories, Makita has introduced two new heated base layers to its range of job site apparel. Powered either with Makita's 18V LXT battery or the 12Vmax CXT battery, professionals can stay warm when working in cold, harsh job site conditions with the new DCX200 and DCX201 heated base layer shirts.

With four dedicated heat zones (front waist, both forearms and back) for optimum heat distribution and three heat settings to adjust to changing weather conditions, these new garments can provide continuous heat for up to 33 hours (when used on the low setting with the BL1860B 6Ah LXT battery — sold separately).

Both base layers are made from elasticated fabric to allow unrestricted movement, are machine washable and have a simple switch on/off button that is easily accessible at the front. The key difference between the two products is the style — the DCX200 is a simple pullover style shirt with a round neck, while the slip on DCX201 features a half zip with a stand-up collar.

The new long-sleeved base layers can be powered by Makita's 18V LXT or 12Vmax CXT batteries which can be placed in a battery holder attached to the waist belt.

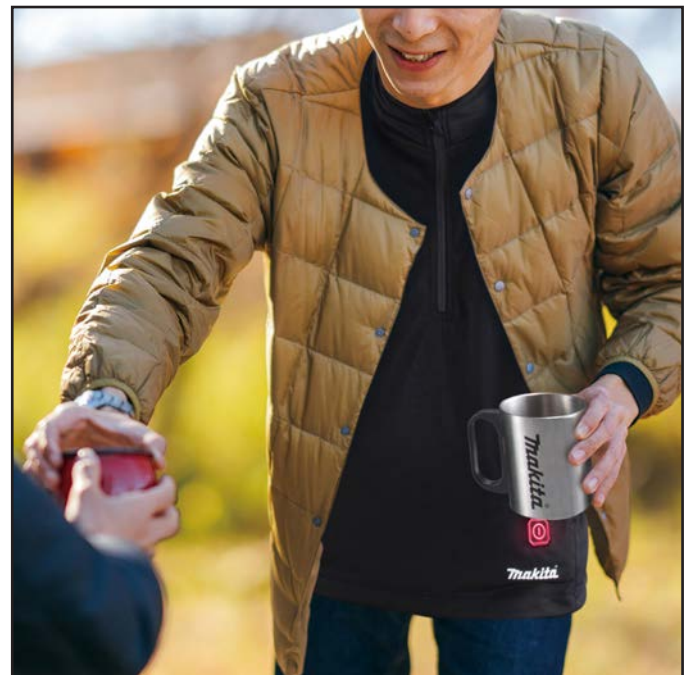
Kevin Brannigan, marketing manager at Makita UK commen-



ted: "Our heated base layers are perfect for anyone who works in cold conditions — whether outdoors or indoors. The four heat zones cover the front waist, top centre of the back and both forearms, providing effective and welcome warmth that will enable users to more comfortably carry out their work, all year round."

The unisex DCX200 and DCX201 heated base layer shirts are available in a range of sizes, from XS to 3XL and join a growing line up of heated jackets and vests that are ideal for the colder months.

Makita
www.makita.com



New trainees on board at Cowie plant marking over 40 years of apprenticeships

WOOD PANEL manufacturer, West Fraser, has marked over 40 years of training, development and supporting young apprentices in the surrounding area, by welcoming three new trainees to the business.

The three apprentices have begun their first year of West Fraser's industry leading four-year apprenticeship programme at its Cowie plant, as part of the Stirlingshire employer's long-established syllabus, which sees apprentices take periods of on-the-job training at West Fraser. Kerr McQueen, Daniel White and Nathan Reilly have all joined the team and will be working as a mechanical apprentice, electrical apprentice and process apprentice respectively — with the latter overseeing the process of manufacturing at the site.

With over 100 apprentices having come through the business across 40 years, West Fraser has always had a strong commitment towards supporting trainees, helping to build skills and provide a clear pathway to a career within the sector. Currently 50 per cent of its overall work force at the Cowie facility started off on an apprenticeship.

Daniel White, who is working towards an electrical apprenticeship qualification, said: "So far, the team has been very welcoming and supportive. Seeing how the day-to-day works and meeting new people has been fantastic. I'm hoping that by the end of my apprenticeship, I'll be able to secure a permanent job with the team to continue my development as an electrical engineer."

Nathan Reilly, who is working on a Process Apprenticeship, said: "I'm enjoying the friendly and professional environment so far at West Fraser. I'm hoping to gain valuable experience and eventually get my qualification to help me further grow within the role."

Ashley Mitchell, HR manager at the West Fraser plant in Cowie, said: "West Fraser recognises the importance of hands-on experience for those starting out in work, so providing an opportunity to educate and develop young people to tackle the skill gaps within our industry remains a priority for us. With over 40 years of experience in the developing and supporting young apprentices, our well-rounded programme is a fantastic way of training our apprentices on the varied work systems that we have in place and offers a clear path on which to progress at West Fraser. All three of our first-year apprentices have already proved to be fantastic additions to our team and we are excited to see them progress over the next four years as part of the West Fraser family. We also urge anyone interested in an exciting and fulfilling apprenticeship with our team to get in touch, as we're currently looking to consider our next year of trainees at West Fraser."

West Fraser ● <https://uk.westfraser.com/>



Apprentices, from left to right, Nathan Reilly, Kerr McQueen and Daniel White.

Selco supports charity's party



A KIND-HEARTED builders merchant has helped children who have fled domestic abuse by contributing towards a special Christmas party.

Selco Builders Warehouse's Tyseley branch donated £500 of art materials to KidsOut, a national charity that works with some of the 200,000 children who have left abusive homes to seek sanctuary in a refuge.

The materials from Hobbycraft were used at KidsOut's Christmas party recently, where there were craft activities for the children to enjoy.

Simon Paris, manager at Selco Tyseley on Wharfedale Road, said: "KidsOut does amazing work supporting some of the most vulnerable children in society and just giving them something to smile about. We were made aware of the charity and the Christmas party by one of our loyal customers and we were very pleased to help with this donation."

KidsOut works in collaboration with Women's Aid, partner charities and corporate supporters to remind traumatised children what it is like to be children.

The charity organises days trips, toy boxes and fun days for the children to enjoy.

Sara Williams, CEO of KidsOut charity, said: "A huge thank you to Selco for their generosity and support. Our Christmas party was a chance for children to forget their troubles for a while and to have some fun."

"All of the materials that we have to purchase for the events have increased in cost so we're indebted to our supporters."

With hundreds of trade brands always in stock, Selco's 75 UK branches are firmly focused on helping tradespeople complete their jobs as quickly and effectively as possible.

As well as offering trade services, Selco also has a strong digital presence including Click & Deliver and Click & Collect services and a new app — as well as a 'Dial & Deliver' telephone service — to make life as convenient as possible for tradespeople.

Selco ● www.selcobw.com

MKM Building Supplies pledges local charity support at opening of its 124th branch in Boston

A LEADING UK independent builders' merchant, MKM, has opened its 124th branch in Boston, Lincolnshire. Creating 18 local jobs and marking the company's eighth MKM branch in the region.

Branch Directors Adam Keal and Mark Pellow were joined by MKM's 6ft 5in mascot 'Bricky' as they welcomed local trade and retail customers into the new branch. Boston charity The Butterfly Hospice Trust were also in attendance and were presented with a cheque for £1,630 as MKM Boston's chosen charity.

Commenting on the opening, Branch Director Adam Keal, whose 21+ years of industry experience has seen him working in businesses including Turnbull's, Buildbase, and Travis Perkins, said: "It feels fantastic to finally be open. Having lived locally all my life, it's a privilege to lead a busi-

ness in my hometown. We had a great turnout on opening day and presenting the cheque to The Butterfly Hospice Trust was a special moment for Mark and me. It's important to us that we do more than just supply great products, we're determined that the branch will uphold MKM's well-known values to provide support to local projects and charities. We've also just agreed to become a lead sponsor for Boston Utd and hope to be part of many more community projects going forward.

"The team at MKM Boston has combined experience of over 200 years, and we're incredibly proud of the specialisms we'll be providing to customers, notably in plumbing and heating — where our man Dan Holland has over 12 years' experience — and in other areas like renewables and roofing."

Julie Baker, Fundraising Champion of The Butterfly Hospice said:



"We were delighted to accept the cheque and being present on the grand opening day. How wonderful for the town to be welcoming a new business."

MKM Boston sits on a 15,000 sq ft plot and will supply tradespeople and the public with a diverse range of building materials and services including timber sheet & joinery, 3D bathroom and kitchen design, landscaping products, renewables, brick matching, flooring, plumbing and heating and roofing and civils. The team will also offer 'drawing take off' – which will enable customers to have the materials for their entire build project costed from architects' plans. Among the standout brands stocked at the MKM Boston branch are Siniat, Kronospan, Unilin Insulation, Kingspan Insulation, Plasmor, IG Lintels, Global Stone, Ibstock, Worcester and Ideal Boilers and Polypipe.

Branch Director Mark Pellow, who has over 35 years of industry experience, added: "One of the great things about Boston is the close-knit nature of the community. The support and well wishes we've received so far have been overwhelming. We want to be known as the local merchants for local people; welcoming, knowledgeable, and always helpful.

"If you're a builder, joiner, brick layer, tiler, plumber, plasterer, fitter, landscaper, home improver or weekend DIYer then our message is simply, 'we're the big yellow building down the road, come in and give us a try.'"

Tradespeople and the public are encouraged to drop in to the new MKM Boston branch based at Boston Industrial Centre, Norfolk Street, Boston, PE21 9HG. The branch offers free local delivery.

MKM
<https://mkm.com>

Selco continues to hit charity heights



Shine Walk.

CUSTOMERS, colleagues and suppliers at Selco Builders Warehouse are standing up to cancer to help raise more than £150,000 for the company's nominated charity in 2023.

A packed year of fundraising activity from the leading builders merchant has seen Selco raise the mammoth total for its charity partner Cancer Research UK.

November saw all 75 branches and Selco's Support Centre come together to put the spotlight on the charity activity, with colleagues taking part in fancy dress days, joining forces for fitness challenges to complete either 500 press-ups, sit-ups or push-ups each day for a week and enjoying sweet treats in bake sales.

Earlier in the year, colleagues participated in abseils — including one down the Spinnaker Tower in Portsmouth — completed cycle challenges and a 15 mile walk across London, while the annual Selco Golf Day was hosted at the West Midlands Golf Club.

The fundraising means Selco has donated more than £350,000 to Cancer Research UK in the last two years, which will be used to help the charity's research into the prevention and treatment of cancer through the work of over 4,000 doctors, nurses and scientists.

Alison Wong, head of communications and sustainability at Selco Builders Warehouse, said: "Having Cancer Research UK as our nominated charity has truly resonated with everyone associated with Selco and that has been a key factor in us being able to raise such an incredible amount of money. The charity does fantastic work in carrying out vital research to tackle an illness which touches everyone's life in some way and we are proud to play our part in supporting that effort. The engagement levels have been fantastic and we look forward to more of the same in 2024."

Donation bins have also been placed in all Selco's branches and at Support Centre for customers and colleagues to donate household items and clothes, with £25 going to Cancer Research UK for each full bag.

Georgia McCormack, divisional fundraising manager at Cancer Research UK, said: "We have been blown away by the support Selco has provided us over the last two years.

"The business as a whole has shown fantastic commitment to fundraising and the sum raised is absolutely brilliant, particularly when you consider the challenging economic conditions everyone in the country is feeling. Our progress relies on the incredible dedication and commitment of volunteers and supporters like Selco, without whom we would not be able to fund our life-saving work. One in two of us will get cancer in our lifetime. All of us can support the research that will beat it."

With hundreds of trade brands always in stock, Selco's 75 UK branches are firmly focused on helping tradespeople complete their jobs as quickly and effectively as possible.

As well as offering trade services, Selco also has a strong digital presence including Click & Deliver and Click & Collect services and a new app — as well as a 'Dial & Deliver' telephone service — to make life as convenient as possible for tradespeople.

Selco

www.selcobw.com



Abseiling in Portsmouth

Warringtonfire to open UK's largest built environment product testing facility



WARRINGTONFIRE, a global leader in fire testing, inspection and certification (TIC), has announced plans to open a new facility in Warrington, UK. Expected to open in 2025, the new facility is expected to be the largest in the UK and provide fire testing, technical and certification services.

Customer demands for Warringtonfire's product testing are set to continue to grow significantly, due to increasing regulatory requirements, the introduction of additional standards, the rising importance of third-party certification and product assurance as well as the need for shorter testing lead times. The new facility will meet this increased demand; it will represent an almost 80% increase in size over its existing facility in the region and is expected to triple Warringtonfire's testing capacity in the medium term.

The new facility, which is being built at Birchwood Park near Warrington, will add unique capabilities including eight state-of-the-art fire resistance testing furnaces, comprising three horizontal and three vertical furnaces (designed to evaluate the fire performance of different products or assemblies built either horizontally or vertically), and two indicative furnaces (which provide a very focused testing method to quantify the ability of a material or assembly to withstand exposure to high temperatures). The new facility will also provide larger preparation areas to improve workflow as well as higher quality and more accessible customer reception and viewing areas.

In line with the commitment to be more sustainable, the new facility will implement extensive measures to reduce energy use, maintain air quality and potential environmental impacts, including built-in recycling systems, energy-efficient fans, plus smoke & odour capture and treatment.

The new facility will create over 50 new jobs in the Warrington region, with a commitment to training and upskilling new and existing employees. The 200 strong team will be one of the world's largest teams of fire technical experts.

Jason Dodds, VP of Warringtonfire, said: "Our new fire testing facility in Warrington is a major investment in the region and a statement of our

ambition for the business. We are excited to be expanding into Birchwood Park and undertake our essential product testing in this state-of-the-art business park.

"The new facility will significantly improve Warringtonfire's testing offering for our customers, providing a faster and more wider ranging service, as well as expanded access to technical excellence delivered by the foremost experts in the fields of fire testing and certification. It will solidify our position as the go-to partner for fire testing and related services and broaden our ability to serve customers across the value chain. Using best in class building design and new technology, we will also be able to greatly improve our environmental footprint, which is incredibly important to us as a company and is becoming increasingly important for our customers."

Warringtonfire's existing facility will continue to operate at full capacity while the new facility is under construction. Following the transfer of fire resistance testing to Birchwood Park, part of the existing facility will be used to create a centre of excellence for reaction to fire testing, which are smaller scale tests including spread of flame and heat release.

Construction of the new 101,000 sq. ft. facility has begun and is expected to be completed in 2025. The designers were TP Bennett Architects and Hoare Lea and construction is being managed by Arcadis with Tilbury Douglas as the principal contractor carrying out the works.

Warringtonfire specialises in providing comprehensive testing and certification services related to infrastructure, with a portfolio of services including fire resistance and reaction to fire testing, security, durability and weather testing, product certification and inspection.

Warringtonfire works with key stakeholders at every stage of the project lifecycle, from architects and designers to contractors and developers, planning and local authorities, building owners and operators and product manufacturers.

The new enhanced facility will be of particular use for product manufacturers for their R&D development for bringing a product to market or for achieving certification.

Warringtonfire ● www.warringtonfire.com

Stoke tradesman secures national award

A STOKE-ON-TRENT landscape gardener has become Selco's final Extra Mile Award winner for his contributions to the local community.

Burslem's Nathan Brammer has been named one of the three UK winners of Selco's campaign to recognise kind-hearted tradespeople who have gone above and beyond to give back to their local community or charities.

Nathan, aged 33 and the owner of Tru-Pro Landscaping, stepped up to transform the garden of a Sandbach family whose nine-year-old son, Lincoln Stafford, was diagnosed with Duchenne Muscular Dystrophy.

Rebecca Stafford, Lincoln's mother who nominated Nathan for the award, said: "It was an unbelievable gesture which has really transformed our lives.

"I was on the radio a while back talking about Lincoln and, within 30 minutes, Nathan had been in touch with an offer to help. He and his team gave up a huge amount of time to not only carry out the work but also sourcing product from suppliers to give us a garden

we could only have dreamt of. The team installed artificial turf and carried out ground-levelling work because Lincoln can only really walk on flat surfaces now.

"Lincoln struggles with all aspects of daily life, from getting dressed in the morning to climbing the stairs or lifting himself off the floor or a chair. Life can be very challenging watching your child struggle against a disease like that but the kindness of Nathan and his team gives you hope.

"Every time I go outside or look out of the kitchen, I remember the love that went into creating the garden and it makes it incredibly special. There is no more deserving winner of the award than Nathan."

Nathan receives £1,000 worth of credit to spend at Selco's branches or online as his Extra Mile Award prize.

He said: "It's a real honour to win the award and I'm very grateful to Rebecca for the nomination.

"When I heard her story on the radio, we knew straightaway we wanted to do what we could

to help and we are all thrilled we could make a difference.

"We've helped out with a couple of similar jobs since and we are keen to do more in the future and give something back."

Alison Wong, head of marketing communications and sustainability at Selco Builders Warehouse, said: "We received dozens of very strong entries highlighting the outstanding work trades-

people do over and above their day job and it was an extremely difficult task to select winners.

"It was a wonderful gesture of Nathan to offer his help to Rebecca, Lincoln and the rest of the family and it was exactly the type of kind-hearted act we were looking for when we launched the Extra Mile Awards."

Selco
www.selcobw.com



Nathan Brammer with Craig Dickinson, Branch Manager at Selco Wolverhampton.

EPAL QR pallet launch marks step change in pallet traceability

EPAL UK & Ireland has announced that EPAL has launched a traceable pallet that will significantly improve the traceability and efficiency of users' supply chains. The EPAL Euro QR pallet features a scannable code linked to a unique serial number, helping to boost supply chain visibility, improve efficiency, and optimise stock management.

Located on the right-hand side of the pallet, the QR code can be linked to the goods being transported, and gives users other essential information such as the pallet manufacturer, age of the pallet, how many times it has been used in the EPAL network, the number of repairs it has had, storage times, and location.

Pallet users can share this information easily with its partner suppliers and customers in the supply chain. The improved visibility will reduce pallet losses because it enables businesses to know exactly where their pallets are located and enable swift action in the case of events such as product recalls.

The QR code is marked on the Euro pallets with long-lasting inkjet printing, successfully tested within the EPAL network, and readable with a standard barcode reader.

Felicity Smith, National Secretary for EPAL UK & Ireland, said: "The Euro QR pallet is a significant development for EPAL, adding traceability to the list of benefits users already enjoy from being part of the EPAL network. It is an innovation that means EPAL pallets now not only protect the goods they are carrying but can also provide operational data that is essential for an efficient modern supply chain."

The Euro QR pallets are manufactured and repaired to the same independently audited quality standards as regular EPAL pallets. The pallets are freely exchangeable within the existing EPAL international pallet pool across 35 countries.

Administering some 650 million EPAL Euro pallets and 2 million box pallets internationally, EPAL is believed to be the world's largest open exchange pool.

EPAL ● www.epal-pallets.org/eu-en/



Selco Bradford celebrates anniversary

A BRADFORD builders merchant celebrated its 15-year anniversary by welcoming Lord Mayor Councillor Gerry Barker into the branch as part of a day of celebration.

Selco Builders Warehouse, based on Tong Street, first opened its doors in 2008 and today stands as one of the company's 75 UK branches.

To mark the landmark, Selco held a day of celebration which included a visit from Councillor Barker who met customers and colleagues.

A charity raffle and cake sale were held in aid of Cancer Research UK while there was a special darts competition held for customers as part of the company's partnership with the Professional Darts Corporation (PDC) and a trade day supported by a number of Selco's suppliers.

Bradford branch manager Dave Penney said: "We've been a big part of the local community for 15 years and it was great to be able to mark the occasion with an in-branch celebration event."



"We wanted our customers and colleagues — who have both been a big part of the branch's success — to be able to celebrate with us and it was fantastic to welcome the Lord Mayor along too."

"We've had a fantastic 15 years in Bradford serving local tradespeople going about their jobs in and around the city and we look forward to many more years being at the heart of the community."

With hundreds of trade brands always in stock, Selco's 75 UK branches are firmly focused on helping tradespeople complete their jobs as quickly and effectively as possible.

As well as offering trade services, Selco also has a strong digital presence including Click & Deliver and Click & Collect services and a new app — as well as a 'Dial & Deliver' telephone service — to make life as convenient as possible for tradespeople.

Selco ● www.selcobw.com

Blue Diamond Technologies re-acquired by original owners

BLUE DIAMOND Technologies Ltd is delighted to announce a return to UK ownership following its purchase, four years ago, by Swedish seal and bearing manufacturer Trelleborg Group.

Incorporated in 1977 as a stockist and distributor of engineering and industrial components, Blue Diamond was originally owned and managed by members of the Worley family. It is two of the original directors who are responsible for its re-acquisition now. Richard Worley, former managing director and his brother, James, former operations director, aim to build on the company's previous reputation for reliability and service, setting it back on a path for growth to match its previous success in supplying a wide range of industries within the UK and beyond.

Under the new ownership, Richard will be chairman and James will be managing director. The company will continue to operate from its existing offices and warehouse in Chandlers Ford, near Southampton in Hampshire. This event forestalls the likely closure of the company and secures jobs for over a dozen local employees, some of whom have been



Blue Diamond chairman, Richard Worley (right) and managing director, James Worley return to Blue Diamond.

with the company for more than 20 years.

Prior to its takeover by Trelleborg in 2019, Blue Diamond had spent 40 years developing a secure and well-established supply chain for custom parts covering manufacture to final delivery, working with the best suppliers in Europe and the Far East to provide all the benefits of global procurement with the convenience of a single UK source. Stock-holding too became a key benefit offered by Blue Diamond with the company taking full responsibility for security of supply and stock control management.

Managing Director James Worley explains, "Blue Diamond is not considered a core operation for Trelleborg, whose main interest was the sealing technology developed alongside Blue Diamond's engineering expertise. Richard and I were in at the beginning with Blue Diamond, nurturing its capability and developing its specialist skills so when the opportunity came along to be involved once more, we jumped at the chance!"

Blue Diamond Technologies Ltd ● Tel: 023 8025 8966
sales@blue-diamond.co.uk ● www.blue-diamond.co.uk

Leeds rugby league club wins clubhouse boost

A THRIVING Leeds rugby league club has won thousands of pounds of building materials in a national competition as it moves closer to completing its new clubhouse.

West Leeds Amateur Rugby League Club were crowned champions in Selco Builders Warehouse's Growing Grassroots competition, in conjunction with the Rugby Football League (RFL).

The club, based on Redshaw Road, has won £2,000 to spend at Selco Elland Road, as well as a visit from England players and tickets to a Test match.

West Leeds Amateur Rugby League Football Club are in the final throes of building a new £130,000 community clubhouse with changing rooms, kitchen, viewing area, toilets and storage area.

Sam Horner, a trustee at the club, said: "We were thrilled to win the Growing Grassroots competi-

tion. Some of our younger players loved meeting England stars Tyler Dupree and Caitlin Beevers. It was a really inspirational experience for them and winning tickets to the England v Tonga match was also fantastic.

"The icing on the cake, though, was the £2,000 to spend at our local Selco. Our new clubhouse is really taking shape and this will allow us to buy some of the materials we need to finish the job.

"A huge thank you to Selco and the Rugby Football League. It means so much to us to have their support."

Selco is an official partner of the RFL and was an official partner of the Rugby League World Cup in 2022.

Bobby Bahadori, head of partnerships for RFL, said: "This was a fantastic competition and we're delighted that such a worthy club won. West Leeds ARLFC have worked really hard to build a



new clubhouse and this prize will come as a significant boost.

"Tyler and Caitlin really enjoyed meeting some of the West Leeds ARLFC players and supporting grassroots rugby, which is where it all began for them."

Alison Wong, head of communications and sustainability at Selco, said: "We have a long and proud record of supporting rugby league over the last decade. Local clubs like West Leeds ARLFC are the lifeblood of the

sport and we're delighted to be able to help through Growing Grassroots. Their new clubhouse will be a huge benefit not only to players and supporters but for the wider community and we applaud their volunteers for their efforts."

With hundreds of trade brands always in stock, Selco's 75 UK branches are firmly focused on helping tradespeople complete their jobs as quickly and effectively as possible.

Selco ● www.selcobw.com

Power up with Makita's new power converter

IN A MOVE that further supports professionals with convenient and unrestricted access to power, Makita has announced the launch of its new BAC01 36 V Power Converter. This useful solution turns DC power into AC power and is suitable for battery charging or the use of corded tools in outdoor job sites where an AC outlet is not available.

Specifically, the new solution converts power from Makita's 36V battery packs to AC power for a wide range of applications — simply by connecting the PDC01 or PDC1200 battery pack to the power station.



The power converter has been designed to support a variety of requirements, offering multiple outlets that include two AC outlets, two Type A USB output ports, two Type C USB outlet ports and one DC12V cigar socket. Collectively, users have access to a wide range of options to power multiple items when out on site and it can also be used to recharge Makita's batteries for use with its cordless power tools or outdoor equipment.

Runtime is application dependent. For example, the PDC1200 will power a 1000 W load for about 56 minutes, and the PDC01 with 4x BL1860B batteries will power a 750 W load for approximately 20 minutes.

Owing to the focus on portability and functionality, the power converter is also compatible with Makita's Makpac system to allow for easy transportation. Measuring just 39.5 cm by 34.5 cm by 16.3 cm and weighing 7.3 kilos, it can otherwise be handled using the built-in carrying handles located on both sides of the unit which are retractable when not in use.

Kevin Brannigan, Marketing Manager at Makita UK, commented: "We're always looking for opportunities to meet our customers' needs, with our new BAC01 Power Converter doing just that. We foresee this being a highly useful and complementary piece of equipment for tradespeople working on large sites, or in remote areas where there isn't a power supply available. It's an easily transportable, highly effective source of power that is compatible with a variety of tools and lighting equipment."

With a nominal battery voltage of 36 V, the BAC01 has a maximum power output of 2,800 W and continuous rating output of 1,400 W.

Makita ● www.makitauk.com

Makita updates impact driver range

MAKITA has introduced a new Impact Driver to its powerful XGT range. Offering the same benefits as its predecessor, the leading manufacturer has introduced new dual spring technology and enhanced anvil stability for less bit wobble with its new TD002G 40VMax XGT Brushless Impact Driver.

Powered by a 40VMax XGT Li-Ion battery, the heavy duty TD002G 40VMax XGT Brushless Impact Driver delivers a maximum fastening torque of 220 N/m, a no-load speed of up to 3,700 rpm and up to 4,600 impacts per minute. Notably, Makita has developed a new dual spring mechanism for this impressive tool, consisting of two types of springs with different load capacities to adjust impact power according to the workload, whilst helping to reduce recoil and vibration. This enables more comfortable operation across a wider range of applications, from light-duty screw tightening to heavy-duty metal fastening where the second spring is utilised.

Furthermore, an increased screw tightening speed enables greater working efficiency — between 10% and 25% faster, depending on the type of screws being used. Users will also appreciate the one-touch bit installation which has been refined to remove resistance when inserting the bit. As such, screwdriver bits can be inserted easily with one hand without needing to pull back the chuck collar.

With variable speed control and multiple operation modes; 4-speed power selection plus 6 assist modes (2x T-modes, 1x Wood mode, 3x Bolt modes), the tool can be used for precise work across a wide range of applications. The LED lights on the front of the tool head aid visibility for poorly lit conditions.

As with all cordless impact drivers produced by Makita, a range of accessories are also available to accompany this model. These include an eight-piece socket set, six-piece nutsetter set, and 33-piece screw bit set.

Kevin Brannigan, Marketing Manager at Makita UK commented: “We pride ourselves on making continuous improvements to our range of power tools – this ethos has been central to Makita’s longevity and success over the past 100 years. What may seem like small improvements can make a big difference, and this is certainly the case with the new dual spring system in the TD002G. Users can expect greater comfort thanks to the introduction of a second spring to support heavier duty applications.”

Makita ● www.makitauk.com



Alphington Blazers live footballing dream

MEMBERS of a boys’ junior football team enjoyed a taste of life as a professional footballer after winning a training session with the management team of Exeter City — thanks to one of the UK’s leading builders merchants.

Alphington Blazers under 14s claimed the prize in a special competition run by Exeter’s club partners Selco Builders Warehouse, which has a branch on Marsh Barton Road, Filmer Way.

Alphington Blazers, who play in the Exeter Youth League, also won 20 tickets to a League One game at St James Park and a new kit for the 2023-24 season.

Exeter City boss Gary Caldwell led the training session at the club’s Cliff Hill complex, along with assistant manager Kevin Nicholson and first team coach David Perkins.

Gary said: “It was a fantastic training session and it was really enjoyable to be able to give something back to grassroots football by training the lads from Alphington Blazers. We replicated many of the training sessions we would carry out with the first team and the lads were fantastic at taking our advice on board. We had some great fun with the team and we wish them every success for the rest of the season.”

The Selco competition was open to any boys’ or girls’ team playing in a recognised league at any age group between under eights and under 15s in and around Exeter.

Jamie Littley, manager of Alphington Blazers, said: “It was a brilliant experience for the team and something they will remember

for a long time. Gary and his management team were great with the lads and to go to the fantastic facility at Cliff Hill and to learn from some top EFL coaches was a real treat. We can’t thank Selco enough for running the competition.”

With hundreds of trade brands always in stock, Selco’s 75 UK branches are firmly focused on helping tradespeople complete their jobs as quickly and effectively as possible.

Selco ● www.selcobw.com



Register to visit Materials & Finishes Show 2024

ORGANISERS of Materials & Finishes Show (formerly W Exhibition) have announced that visitor registration for the relaunched UK trade show for the furniture manufacturing and joinery industries is now live! The event, which has over 50 years of heritage, returns to the NEC in its new and reinvigorated format from May 19-22, 2024.

Materials & Finishes Show, which is part of Montgomery Group's global event portfolio, will bring the UK's furniture manufacturing and joinery industries together for the first time since 2018 when it returns next May, having undergone an extensive period of research and development.

The trade show is the primary platform for carpenters, joiners, machinists and installers to see running woodworking and stone machinery, the latest materials, components, software, tools and innovations for the woodworking sector. Visitors will have the opportunity to see running machinery together with components, materials, technology and services for the manufacturing and processing phases of materials, alongside the latest products and developments for finishes at the event. The stellar lineup for the event includes the likes of RJ Woodworking Machinery, Vertongen, AMS/Wadkin Bursgreen, Hanex, Hranpiex, Rubio Monocoat and Mundy Veneer, with new brands joining the lineup weekly. Alongside networking with the entire industry under one roof, visitors to Materials & Finishes Show will be able to see thousands of the latest products on the UK market and speak directly to leading manufacturers & suppliers for the woodworking sector. A new live demonstration zone will allow visitors to see many of these products in action for the first time.



Materials & Finishes Show event director, David Todd said: "The countdown to Materials & Finishes Show is officially on and we are delighted to announce the visitor registration is now live. This is the first time that the UK furniture manufacturing and joinery industry will have had the opportunity to come together since 2018, which presents a huge opportunity to see all of the latest developments in products and processes that have progressed in this time. Alongside this, we have been working hard behind the scenes to develop new and exciting features that will add real value to visitors who make a trip to Materials & Finishes Show, from the new CPD certified learning programme through to our live demonstration area. We're excited to make further announcements about the new features and partnerships over the coming weeks."

Visitors will be able to benefit from over 40 hours of CPD certified learning content which will be delivered on the new seminar theatre. Visitors can expect to attend sessions covering the latest industry topics, delivered from industry experts from dust extraction and sustainability, through to content designed to help the drive more leads and operate more efficiently. **Materials & Finishes Show 2024 ● www.materialsandfinishesshow.com**

Venjakob: customised finishing solutions

VENJAKOB North America gave live coating demonstrations on a VEN SPRAY ONE and presented several well-thought-out industrial finishing processes for the wood, furniture and building material industry at the recent WMS Show 2023 in Mississauga/Toronto (2-4 November 2023).

Various technologies are provided to apply functional or decorative coatings on surfaces of flat or complex geometries. No matter if visitors were just switching to automated spray coating and might be looking for a standalone machine, or if they were a highly industrialised and large capacity manufacturer, operating with a complete and fully automated finishing line: Venjakob invited them all to rethink their finishing processes together with the specialist for surface technology.

Resource shortage, environmental protection, sustainability, and lack of workers are buzzwords that are on everyone's lips. Venjakob was happy to discuss these topics at the trade fair and share information on what the company has done to optimise users' production processes with its technology.

For example, by installing an innovative, resource-saving recirculation system in the large-capacity booth of the VEN SPRAY PERFECT spray coating machine; for the application of water-based coating materials. This has proven to save heating energy and reduce envi-

ronmental emissions. The integrated air humidification system assures achieving highest coating quality with low energy consumption.

60 years of experience let Venjakob become an expert for tailor-made finishing solutions. The modular design enables fast adaption to changing market requirements and makes the investment future-proof, according to the company.

Venjakob North America ● www.venjakob-na.com



HOLZ-HANDWERK — where the woodworking sector develops answers to the challenges of the future

DESPITE the tough economic situation, HOLZ-HANDWERK is still making good headway and is set to present the professional community with a comprehensive product display covering the entire woodworking value chain.

For example, machinery will still account for around 40 percent of the total display area, while non-machinery product segments like supplies or hardware are also very well positioned. Nevertheless, the current economic situation is forcing some exhibitors from the machinery segment to opt out of attending HOLZ-HANDWERK 2024. In combination with FENSTERBAU FRONTALE, HOLZ-HANDWERK will provide valuable and timely orientation amid the crisis as well as responses and solutions to the challenges in the woodworking and wood processing industry.

The good participation levels overall show that many market players appreciate a leading industry platform like HOLZ-HANDWERK, even and especially in challenging times. Skilled trade businesses in particular need the trade fair in times like these so that they can continue to position themselves effectively for the future. This was underlined by Bernhard Daxenberger, President of the Bavarian Carpentry Association (FSH): "The HOLZ-HANDWERK trade fair is already creating a buzz and we are once again looking forward to the largest gathering for the industry in 2024. Even though some machinery manufacturers will not be there, many important partner companies to our trade will be making the trip to Nuremberg. It is therefore sure to be another exciting event, whose concentrated format allows our members to readily find suitable contacts from supplier companies for all business segments. Especially in the current challenging times, it is important to look ahead together and tackle the major challenges in innovative ways. HOLZ-HANDWERK will provide the ideal platform for doing so." Stefan Mayer, Managing Director of Werkstätte Mayer, is also looking forward to the trade fair: "The concentrated presentation of machines, hardware and software on site offers an unrivalled opportunity for a deep dive into the sector."

"We are extremely pleased by the commitment to HOLZ-HANDWERK shown by the trade. For tradespeople in particular, the exhibition offers an excellent, wide-ranging display. Obviously, we are sorry that some exhibitors from the machinery segment have declined to take part.

"But we are confident that there is no better and more focused event than HOLZ-HANDWERK worldwide for carpenters, joiners and semi-industrial wood processors," says Bernhard Dirr from the VDMA Woodworking Machinery Association.

Stefan Dittrich, Director HOLZ-HANDWERK, expands: "Overall, the registration rate of more than 300 exhibitors is still good, even if, as already mentioned, we have had some cancellations. But there are also some highly positive developments. In the non-machinery segment, more exhibitors are registering than at any time in the last five years. Key players such as Häfele, Festool and Grass will be

returning to HOLZ-HANDWERK in 2024. Power tools are another segment that is looking very promising. This sends out a great message to the professional community."

HOLZ-HANDWERK continues to cover the entire value chain of the woodworking and wood processing sector and offers an impressive depth of content. The content of the supporting programme and the products on display have been fine-tuned and precisely adapted yet again to the preferences of the tradespeople working in the field.

In times of major challenges, and via its unique on-site community, the trade fair offers visitors and exhibitors alike a platform for developing relevant solutions for their own future viability and that of the industry.

"From our perspective, a major benefit of the fair is that especially in the current situation, HOLZ-HANDWERK is very much a hands-on event where experiences and discovery take centre stage. It is also an ideal dialogue and communication platform and an absolute must for discussions with exhibitors, associations and organisations, knowledge transfer in forum presentations, and the chance to talk shop with colleagues about the key issues impacting the future of the industry," say Dittrich and Dirr.

HOLZ-HANDWERK is also strengthened by the pairing with FENSTERBAU FRONTALE, a world-leading trade show for windows, doors and facades. Ninety-two percent of the display area at this event has already been confirmed, and all major market leaders have booked their stands. Visitors to HOLZ-HANDWERK can also benefit from innovations, products and solutions for window and door construction at this show.

The Ticket Shop and Ticket Centre for HOLZ-HANDWERK 2024 have been open since mid-October. Interested parties can simply register online now.

Support is also available to help you plan your journey, whether you opt for sustainable rail travel or use your own car. All information is updated constantly on the website. The floor plan and a detailed list of exhibitors are both available.

HOLZ-HANDWERK ● www.holz-handwerk.de



SCM will not be at Holz-Handwerk 2024

SCM will not be taking part in the next edition of Holz-Handwerk, due to be held in Nuremberg from 19 to 22 March 2024.

This is a decision consistent with both the Group's investment plans, aimed at intensifying the direct organisation of open houses and tech tours at SCM's plants around the world and with the strategy, introduced a few years ago, of optimising trade fair investments globally. Furthermore, the suspension of its participation at the German trade fair in 2024 came about following careful analysis of the current social-economic contextual conditions and the relative business opportunities, in light also of the general uncertainties recorded in recent months on international markets, including the DACH area.

As Pietro Gheller, Director of the Product&Markets at SCM's Wood Di-

vision pointed out, "This decision does not exclude SCM from potentially returning to the trade fair in Nuremberg for future editions, conditions permitting". He also observes: "SCM will continue to focus on large international industry trade fair events as well as on the organisation of local events at its own plants around the world so it can be ever closer to its clients in a more capillary fashion, encouraging opportunities for exchange and relations which take into consideration specific local identities and demands".

Directly organised Open Houses and local events entail investments in the various plants around the world. On the subject of which, SCM recently inaugurated a new, state-of-the-art Technology Centre at its headquarters in Rimini: a strategic investment for all the Group's subsidiaries around the world because it will allow them to host an increasing number of tech tours in a state-of-the-art digital and technological centre organised with clients and dealers from all five continents.

Furthermore, SCM recently completed the renovation work on the Technology Centre at the German subsidiary in Nurtigen: there is now 60% more space to house a wider variety of SCM machines and plants and the opening took place with an open house dedicated to the entire DACH area from 15 to 17 November.

The Group is also investing in the creation of new Technology Centres in other strategic markets like Spain, in the historical subsidiary at Sant Cugat, which opened at the end of November 2023, and in Italy, at the Elmag-Superfici plant in Villasanta (Monza-Brianza) which will house a more extensive range of SCM solutions together with those dedicated to finishing.

SCM Group ● Tel 0115 977 0044

scmuk@scmgroup.com ● www.scmgroup.com/en_GB/



SOFTWARE

Creating accurate designs more efficiently

SCOTT'S Timber Engineering and MiTek UK & Ireland have announced a partnership to offer highly detailed 3D modelling and automated design features for housebuilders.

MiTek PAMIR is a specialised roof-truss and Posi-Joist 3D modelling and design software system, which is a powerful and versatile fully integrated CAD, layout and engineering package with full EC5 engineering to the latest design codes. These advanced capabilities translate into numerous advantages for Scotts Timber Engineering's customers, including higher quality drawings and quicker turnaround times when detailing and amending drawings.

James Scott, managing director, Scotts Timber Engineering says: "One of the key strengths of MiTek's PAMIR design platform is its seamless integration with third-party information systems such as PDF, AutoCAD, and Revit. This compatibility enables Scotts Timber Engineering to import and export information and details from architects or engineers quickly and easily, streamlining our workflow."

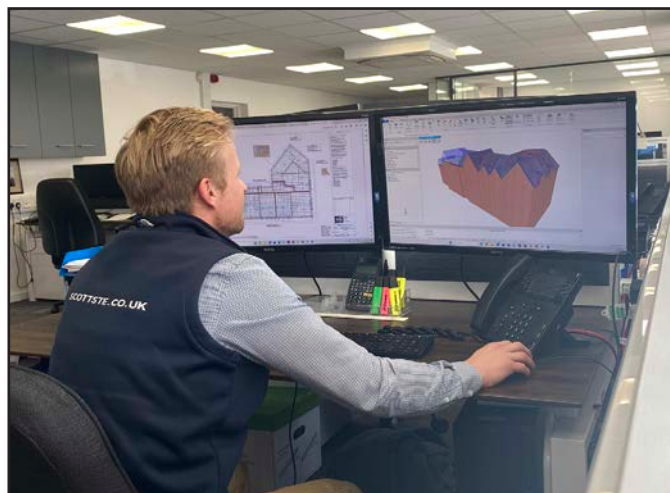
MiTek's PAMIR design software allows the design team at Scotts to create accurate designs more efficiently, resulting in a faster turnaround time for customers. As a result, quote stage designs are more accurate, which reduces the amount of work required to bring preliminary designs up to construction quality.

The transition to MiTek PAMIR

involved a comprehensive review and restructuring of Scotts Timber Engineering's operations. By reevaluating each process, the company was able to identify areas for improvement and build a more efficient workflow.

Billy Richardson, head of sales, Scotts Timber Engineering says: "It is clear that MiTek is investing and developing in its systems beyond its competition, and we wanted to be a part of that. PAMIR has made complicated designs more accurate and streamlined our entire design process. We can now respond more efficiently to client feedback without the need to start from scratch."

Tim Garner, commercial director of MiTek UK and Ireland says: "MiTek are delighted to be working in partnership with Scotts Timber Engineering, and it's great that Scotts are already seeing the many benefits of our software and service. Our design software PAMIR unlocks unparalleled efficiencies, allowing designers to work with speed, accuracy, flexibility and quality. We continue to invest heavily in our suite of software, and we're very excited to bring timber frame detailing into our PAMIR platform in response to the growing adoption of MMC by homebuilders. We look forward to a long and successful partnership with Scotts."



Tim Garner, commercial director of MiTek UK and Ireland says: "MiTek are delighted to be working in partnership with Scotts Timber Engineering, and it's great that Scotts are already seeing the many benefits of our software and service. Our design software PAMIR unlocks unparalleled efficiencies, allowing designers to work with speed, accuracy, flexibility and quality. We continue to invest heavily in our suite of software, and we're very excited to bring timber frame detailing into our PAMIR platform in response to the growing adoption of MMC by homebuilders. We look forward to a long and successful partnership with Scotts."

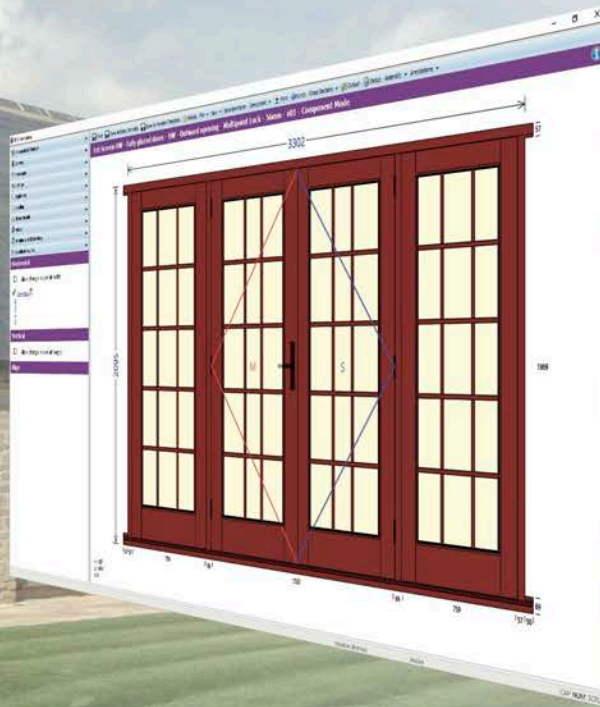
MiTek

www.mitek.co.uk

Scotts Timber Engineering

www.scottste.co.uk

**SOFTWARE THAT
MAKES YOU MORE
PROFESSIONAL,
INCREASES PROFIT,
REDUCES WASTE
AND INCREASES
EFFICIENCY**



**READ OUR 10
REASONS TO BUY
SOFTWARE
FIND OUT HOW
OUR SOFTWARE
SOLUTIONS
COULD HELP YOU**

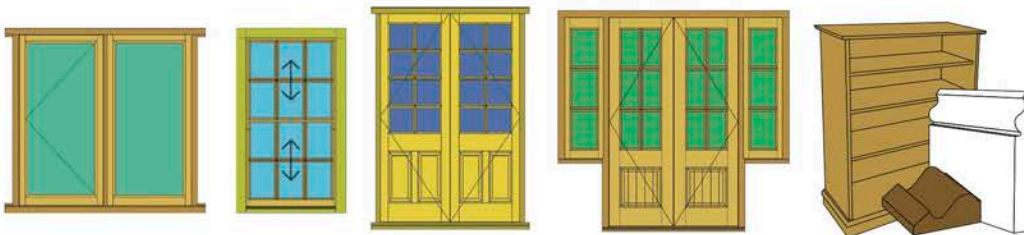
**Scan
Me**

NO COMPROMISES

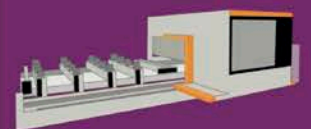
A SOFTWARE SOLUTION FOR EVERYONE

Whether you are a one man band or a door manufacturer making hundreds of doors with multiple locations our software solutions have you covered.

Our software makes you **more professional** with our carefully designed estimates/quotes, **saves you time**, **reduces wastage**, makes you **more efficient** and makes sure that every job is **profitable every time**.



Whether its a 5 Axis, Windowline, Cross Cut or any machine, our software handles it seamlessly from quotation to creation.



CNC Machine Link

“ As soon as I saw a demonstration I could see how fantastic JMS was going to be. The setting out, diagrams, ease of use, the hours that you save by pulling up the saved details; JMS solves all those problems. ”

James Selby, James Selby Joinery

Joinerysoft Ltd
+44 (0) 1608 643302
sales@joinerysoft.com
www.joinerysoft.com



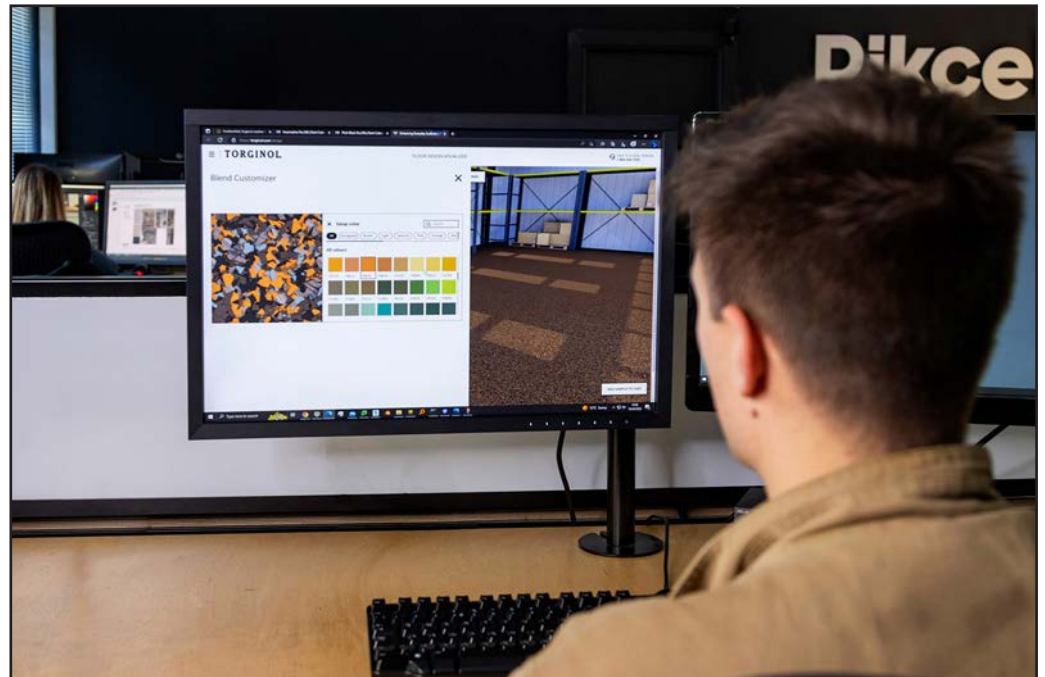

Joinerysoft

Leading US flooring manufacturer Torginol selects Onfigr to create cutting-edge visualiser

ONFIGR, the award-winning visualiser and configuration software development company, has been selected by Torginol to streamline its online visualiser in order to save the brand both time and money on physical samples. By providing photorealistic 3D visuals using the groundbreaking Onfigr Visualiser, Torginol is now able to dynamically cater to customers looking for its range of ready mixed blends and bespoke resin flooring.

Regarded as one of the world's leading manufacturers and suppliers of innovative high performance surfaces since 1961, Torginol is a pioneer in seamless resinous flooring solutions throughout the United States and worldwide. Inspiring greater levels of creativity, Torginol resin floors combine functionality and design versatility to offer limitless variations in colour, pattern, texture, and sheen. And now, to better serve its customers, the Torginol Floor Visualiser provides even more access to its range of customisable flooring solutions.

Onfigr is developed and managed by the award-winning team behind Pikcells.com, and with offices in both the UK and USA, it makes perfect sense for Torginol to enlist the company's industry-acclaimed CGI and software solutions. Grace Gagnon, brand manager at Torginol says "Partnering with Onfigr to develop our flooring configurator has greatly improved our product visualisation capabilities and user satisfaction. Their team took the time to un-



derstand the nuance of our product and really brought it to life."

The new Torginol Floor Visualiser contains hundreds of resin floor blend-presets, as well as a new Blend Customiser tool for digitally mixing bespoke blends including flake sizes, colours and sheens. This highly customisable design feature allows end users to combine infinite options, which can be created and viewed instantly. Thanks to the latest WebGL technology, bespoke blends can be visualised digitally in realistic 2D and 3D environments so users can navigate and easily zoom for a distanced or closer view of the flooring in situ. In fact,

customers can even upload images of their own space as clever AI processors will detect the floor area and map it in their chosen finish so end users can experience exactly how certain products will look in their real-life environment. When the customer has made their final choice, they can simply save and share designs, as well as order samples directly from Torginol, to save time and money for both them and the company.

Pete Simpson, Technical Director at Onfigr says, "As a pioneer in the flooring sector, it was important to create an interactive solution that aligned with Torginol's innovative approach, and our flooring visual-

iser tool puts them firmly at the forefront of the industry."

Stephen Mooney, sales director at Onfigr adds, "By leaning into 3D environments as a new way for customers to experience its products, Torginol can accurately showcase the colours and textures of its durable flooring solutions on screen. End users really appreciate being able to navigate around the 3D interior space and zoom into the flooring so they can be confident their product choice is visually appealing from every angle."

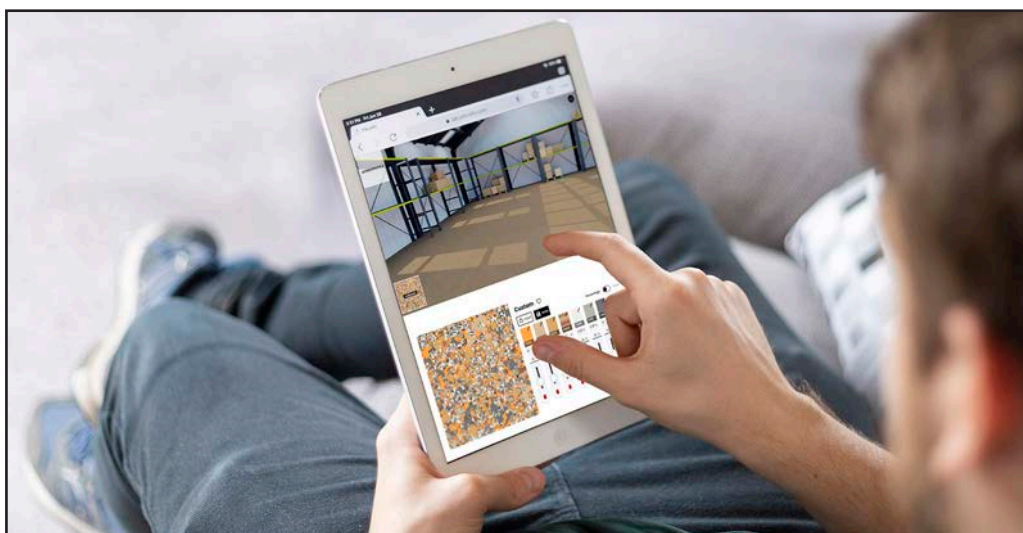
The Torginol Visualiser recently won a Silver Award for Best Technical achievement in the 2023 W3 Awards, recognising excellence in the digital industry and providing a new standard of photorealistic 360° and 3D visualisers. Onfigr helps bring products and spaces to life, helping brands to push boundaries and deliver digital solutions that transform the customer experience, core features including lightning fast 360° configuration, custom UI design and branding, photorealistic visuals, trend presets, a call to action where you can save designs, fully responsive and compatibility on all devices and browsers, analytics and more!

Pikcells

Tel 0333 050 3335

Email stephen@pikcells.com

www.pikcells.com



The complete woodworking CAD/CAM software solution, from design to manufacture

Powerful user-friendly CAM software
for programming CNC routers

ALPHACAM

From simple routed parts to complex, 5-axis furniture components, ALPHACAM can make your CNC router perform better than you thought possible.

- Advanced routing
- 2-5 axis machining
- Full machine simulation
- Powerful nesting
- Reusable machining styles

Find out more alphacam.com



The industry standard CAD software in casegoods manufacturing

CABINET VISION

From cutlists, renderings, shop drawings, bidding and pricing, to CNC output, CABINET VISION makes the easy jobs simple and the complex ones possible.

- Custom cabinet and room designs
- Photo realistic renderings
- Material Optimisation
- Full costing direct from design
- Cutlists and bill of materials

Find out more cabinetvision.com



Innovative Kebony wood at the heart of the transformation of De Rekke school in Stabroek

IN THE HEART of the Belgian town of Stabroek, near Antwerp, the De Rekke school has undergone a striking transformation. The newly completed major renovation, featuring Kebony wood cladding, highlights sustainability and innovation, incorporating both light and nature into its design, central tenets of the inspiring, educational ethos of the school.

The new 8,600 sq. ft. building, designed by Bruno Dekoning, director of local architectural practice bureau ADAM, delivers a redeveloped school alongside the addition of a state-of-the-art gymnasium. The new wing features seven kindergarten classrooms, a reception room, a dining hall with a kitchen, a play corridor, toilets, and a first aid room. Displacement ventilation and underfloor heating ensure indoor air quality and climate control, with environmentally conscious features including solar panels, a geothermal cooling system, a green roof, and sustainably sourced Kebony Character Cladding.



The use of Kebony wood for both the exterior cladding and various interior elements gives the building a natural yet modern feel, in addition to the sense of continuity and calm that enhances

es the learning experience. As Mr Dekoning explains: "The vision for De Rekke was to create a space that was both functional and aesthetically pleasing. We opted for a combination of concrete and Kebony wood. This wood, which develops a silvery-grey patina naturally over time, provides a warm contrast to the concrete to create a harmonious balance and a welcoming setting."

A pioneer in sustainable building practices for over 25 years, Kebony is believed to be the leading global producer of dually modified™ wood. Kebony transforms sustainable FSC-certified softwoods, such as pine, into products with comparable, and in some cases superior, aesthetic and mechanical characteristics to tropical hardwoods. The use of Kebony wood therefore diverts the need for deforestation of sanctioned and endangered wood species, helping to reduce global CO₂ emissions through the protection of vital rainforest carbon sinks.

Developed in Norway, Kebony's patented dual modification™ process permanently transforms the wood cell walls to become 50% thicker, forming locked-in furan polymers in a two-stage process. The wood is first infused with a bio-based liquid, to activate a

chemical reaction in the cell walls and making it dimensionally stable, before being cured in a heating process. The resulting wood has a significantly reduced water sensitivity, does not splinter, and contains no toxins or chemicals, guaranteeing the required longevity and safety that is essential in the context of educational projects such as De Rekke school.

Inge Coeckelbergs, director of the De Rekke school for over 17 years, is delighted with the transformation: "The new spaces are bright and open, contributing to a positive learning environment. The choice of Kebony wood, with its warm appearance and durable properties, aligns perfectly with our vision."

Nina Landbø, international sales manager for Kebony, adds: "The renovation at Stabroek demonstrates the future potential of sustainable construction, both in Belgium and globally. Thanks to the integration of innovative materials including Kebony, and a strong emphasis from bureau ADAM on ecological responsibility, the De Rekke school is setting a new standard for architectural projects in the region."

Photos: Kristian Alveo

Kebony
www.kebony.com



Whatever your LEV demands Extractly will tick all the boxes

When it comes to dust and fume extraction,
Extractly delivers the complete package...

From the wide choice of filter types and technologies available, we source the most appropriate and cost-efficient system to meet your requirements and, from initial consultation and design, all the way through to installation and commissioning, we will be with you at every stage of the process.

The wealth of practical experience within the company, together with an extensive range of proven products, allows Extractly to offer extraction systems which are individually tailored to customers' specific needs.

Whether you need a small mobile extractor, or a high-capacity modular filter unit, an energy-efficient shredder or briquette press, or perhaps a modern spray booth or enclosure... from simply adapting ductwork to suit a new machine installation, to commissioning a complete waste-to-energy system, Extractly's experienced engineers deliver the optimum solution.



Dust & Fume Filtration



Shredding & Briquetting



Energy-Saving Technology



Control Panel Engineering



Service, Maintenance & LEV Testing



Spray Booths, Enclosures
and Curing Ovens



Extractly is the Master UK Distributor and Installer of the Ecogate® energy-saving system, and an Authorised Dealer and Installer of Nordfab Quick-Fit® ductwork



LEV... **extractly** as it should be



Extractly Limited
has achieved
SafeContractor
Accreditation



Extractly Ltd
info@extractly.co.uk
01924 520462

Rotpunkt win kitchens contract for UN17 eco village

ROTPUNKT, a leading designer and manufacturer of climate friendly German kitchen furniture, is proud to win the kitchens contract to furnish 536 luxury apartments at the UN17 village in Copenhagen, Denmark developed by NREP, Lendager Group and Sweco Architects.

Completely redefining sustainability in architecture, the UN17 village is setting new global standards for the buildings of the future. This is believed to be the world's first development in line with all UN17 Global Goals to build a greener, fairer and better world by 2030, and perfectly aligns with Rotpunkt's one mission to zero emission.

Offering 3,000 m² of communal spaces for residents and the people of Ørestad, the UN17 village will be built from upcycled waste materials like concrete, wood, and glass, and after a month-long application and examination phase, the virtues of Rotpunkt's climate friendly furniture won the bespoke kitchens contract.

All Rotpunkt furniture is designed and created under the brand's award-winning Together to Zero climate strategy, where the company reduces its carbon

emissions at every stage of manufacture. Crafted from Greenline BioBoard Gen2, a Rotpunkt kitchen is the sustainable and environmentally friendly alternative to traditional chipboards, and consists of up to 90% recycled wood for the ultimate in green kitchen design.

Matt Phillips, Head of UK Operations at Rotpunkt says, "Every apartment in this impressive 35,000 square metre eco-village offers a modular style kitchen living space, which is ergonomically designed to include a climate friendly Rotpunkt kitchen with built-in eco appliances and fully integrated smart lighting. Our best-selling Zerox furniture made of Greenline BioBoard Gen2 was selected for each kitchen and our popular colours of White, Cashmere and Clay Dark were chosen to present a sophisticated look and feel, while complementing the neutral décor and quality raw materials throughout."

The UN17 village is designed with environmental, social, and economic sustainability at its core, supporting all types of residents including family, independent living and co-habiting. The development is scheduled to be



completed in 2024, and will comprise of five buildings for up to 1,100 residents. Creating a direct link between local urban nature and wildlife, the UN17 village includes a series of biodiverse courtyards, as well as green roofs, rainwater harvesting, vertical greening, biomass heating, and freely accessible growing areas for residents to grow their own fruit and vegetables.

Lena Steffen, Marketing at Rotpunkt adds, "It was incredible to join the Rotpunkt team on a site visit to the UN17 village last month, as it was fascinating to see the considerable progress and of

course our products in situ, with some areas still under construction and others, finished and ready to move in! We are thrilled to bring our carbon positive business philosophy, furniture and commercial expertise to this new development in Ørestad, helping to become a fundamental part in taking a more sustainable approach in the built environment and more specifically, eco kitchens that do not compromise on quality or design."

Rotpunkt
matt.phillips@rotpunktuk.com
rotpunktkuechen.de/en/
rotpunkt.co.uk



Kebony wood clads architect's lakeside cabin retreat in rural Norway

AT THE ENTRANCE to Grønsfjorden, in southern Norway, sheltered from the strong winds on the coast at Lindesnes, lies a stunning and secluded cabin. Finished almost entirely in wood, both throughout the interior and with its Kebony wood exterior cladding, the nature oriented summer cottage has become a welcome refuge from the hustle and bustle of everyday life.

Daniele Sales Myrhaug, co-founder of local architecture and design office Alma Eik, brought her studio's holistic philosophy of harmonious home design into the creation of her own new cabin. Having moved to Norway from Brazil sixteen years ago, an emphasis on the tranquillity afforded by a close relationship with forests was central to the project's inspiration.

As Daniele comments: "Nothing takes the pulse down like a walk in the woodland, so when I was designing my dream cabin, the goal was to recreate the feeling of being surrounded by trees."

The aim was to build a home that was architecturally interesting and functional, whilst adhering to key principles of sustainability and integration to the local environment. The cabin, which measures just 90 m² in size, has three bedrooms, an open living and kitchen wing, bathroom, hallway, loft, and two terraces.

Large windows and sliding doors offer sea views from both terraces, as well as bringing both nature and daylight into the cabin. Inside, all of the rooms, with the exception of the bathroom and the area around the fireplace, are clad in plywood. Almost all the furniture is bespoke, crafted specifically for the property, maximising the space and functionality of the interior as much as possible.

For the exterior façade, Daniele chose to finish the building with Kebony Clear Cladding, directly evoking the rustic, natural character of the surrounding forest.



"We all have a responsibility to think about sustainability," says Daniele, "If you enjoy what you surround yourself with, you won't want to get rid of it. Kebony Clear Cladding is sourced from FSC-certified forests and the materials contribute to the overall experience of being there, not only in terms of sustainability, but also tactility, from the smooth surface of the façade cladding to the smell of wood inside the cabin."

A pioneer in sustainable building practices for over 25 years, Kebony is believed to be the leading global producer of dually modified™ wood.

Developed in Norway, the patent protected Kebony technology transforms sustainable softwoods, such as pine, into products with comparable, and in some cases superior, aesthetic and mechanical characteristics to tropical hardwoods. This diverts the need for deforestation of the planet's vital rainforest sinks, helping to reduce CO₂ emissions.

The wood is first infused with a bio-based liquid, activating a chemical reaction in the wood cell walls to become 50% thicker, increasing the dimensional stability, durability, and hardness of the wood.

The resulting Kebony wood has a significantly reduced water sensitivity and does not splinter which, alongside its minimal environmental impact and refined aesthetic finish, made it the ideal material for the Daniele's beautiful lakeside cabin.

Nina Landbø, international sales manager for Kebony, comments: "We are delighted to see Kebony proving to be a popular choice of cladding material for architects worldwide, and to see these eco-conscious inspirations brought to life through beautiful new private projects of all scales. We wish Daniele many years of enjoyment in her cabin, amidst the natural harmony afforded by the use of sustainably sourced Kebony wood".

Images: Kristian Alveo

Kebony ● www.kebony.com

Ecogate delivers substantial savings for JTC

EXTRACTLY Ltd has retro-fitted Ecogate® ‘on-demand’ control technology across an extensive dust extraction system serving JTC Furniture Group’s manufacturing plant.

Over the last four decades JTC Furniture has grown to become one of the UK’s leading high volume manufacturers and suppliers of fitted kitchen, bedroom and bathroom furniture for the Local Authority and Housing Association property sector, as well as for private property developers, student accommodation and MoD facilities.

Established in 1986, in Dundee, Scotland, the company now operates from two sites in the city, as well as a third satellite office in Wakefield, West Yorkshire. Since 1995 the company’s headquarters, warehousing, distribution and mainstream manufacturing facility have been housed in the historic Camperdown Works; formerly Timex Corporation’s flagship factory. JTC Furniture produces hundreds of thousands of MDF/MFC laminated cabinets, panels and worktops every year, for both new-build and refurbishment projects, as well as undertaking specialist manufacturing for specific applications in education, healthcare and washrooms.

Powered by a total of nine main fans, consuming over 300 kW of electricity per hour, the dust extraction system at Camperdown has the capacity to extract vast volumes of dust-laden air from the workplace. However, delivering this powerful capability comes at a high cost and, with energy costs rising to an all-time high, JTC’s Senior Maintenance Engineer, David Verrall, was asked to investigate the feasibility of installing Ecogate technology and the potential impact that it could have on future energy usage.

As Jake Oldfield, Extractly’s Sales Director, explains: “JTC’s electricity bills were eye-wateringly high and, because the company’s focus is on volume production, machinery utilisation is very high.” Ecogate’s On-Demand technology is eminently capable of achieving substantial energy savings when machinery utilisation varies throughout the working



David Verrall checking stats and energy savings made to date at one of the PowerMASTER™ VSD units installed by Extractly Ltd.



Ecogate® automatic motorised damper retro-fitted into 400 mm diameter ductwork.



Extractly installed a total of nine PowerMASTER™ VSD units at JTC — each unit delivers precise control over the power consumed by each individual fan.

day, but respectable savings can also be achieved when machines effectively appear to be working non-stop.

“Even though key equipment was operating virtually continuously, findings from our energy appraisal survey at Camperdown Works still indicated that worthwhile savings could be made by capitalising on the reduced demand for extraction during operators’ breaks and during loading and unloading operations and, significantly, it showed that some equipment actually only needed extraction for minimal periods during the working day.”

In addition, although constantly powered up, some of the pro-



Large-scale panel manufacture at JTC Furniture Group's Camperdown Works facility.

duction lines at JTC are not continuously creating waste dust, and so don't require continuous extraction. In the vast majority of installations, Ecogate® technology controls the demand for extraction based on a machine's on or off status, but the technology is also capable of determining extraction requirements on a production line using a range of alternative 'proof of cut/dust' monitoring devices.

"Installing the Ecogate system at JTC has had a huge effect", says David Verrall. "Just a few weeks after the system was commissioned, evidence of the promised financial savings were clear to see, but noise levels in the factory are also markedly lower, and the amount of airborne dust in the factory has also been reduced significantly."

At JTC, Extractly installed two of the latest Ecogate greenBOX® Nxt controllers; one monitoring demand and controlling extraction provided by three of the main fans, and the second doing the same for the other six fans. These highly intelligent controllers have the capacity to efficiently control the operation of an extraction system with multiple main fans and up to 72 individual workstations.

The greenBOX® controllers continuously monitor extraction demand across the factory and, in real-time, determine the exact amount of air-flow each fan must provide to fulfil that demand. As well as controlling the extraction system, real-time performance data shows how much electricity the fan motor is consuming, confirms filter pressure, air volume and air velocity at dampers, branches, or for the entire system and, to ensure employees' safety, minimal airflow is managed across the entire ductwork system to reduce the risk of fire or explosion.

Machine utilisation is monitored across the factory and, from data received, the greenBOX® controllers determine the optimum speed for each of the nine fans, and the motor speed for each fan is in turn controlled by an individual Ecogate® PowerMaster Variable Speed Drive Unit (VSD). The PowerMaster VSDs are individually-sized to match the motor power for each of the nine fans, which range from 45 kW to 75 kW.

Ecogate's greenBOX® Nxt has an industrial PC onboard, with Linux-based operating system, and a built-in web server provides remote access for fast, automated update of both Ecogate® and system software.

In addition, the greenBOX® Nxt can automatically stop and start the extraction system at both ends of the working day — system performance is checked at start-up, and confirmed by text or email, and the greenBOX® Nxt will message again at the end of the day to confirm successful system shutdown.

In conclusion, David Verrall commented: "Extractly's engineers did an excellent job; the installation took just a week and a half to complete.

"Based on the savings achieved so far, we expect to see a return on our investment in around 20 months and, as well as the financial savings, we'll also be reducing our carbon footprint by around 20 tonnes of CO₂ per year.

"Just from our experience here at JTC, I would say installing an Ecogate system could be a game-changer for any wood-working business."

Extractly Limited
Tel: 01924 520462
Email: info@extractly.co.uk
www.extractly.co.uk



David Verrall interrogating system performance data at one of the greenBOX® Nxt units that monitors extraction demand and determines optimum speed for three of the main fans.

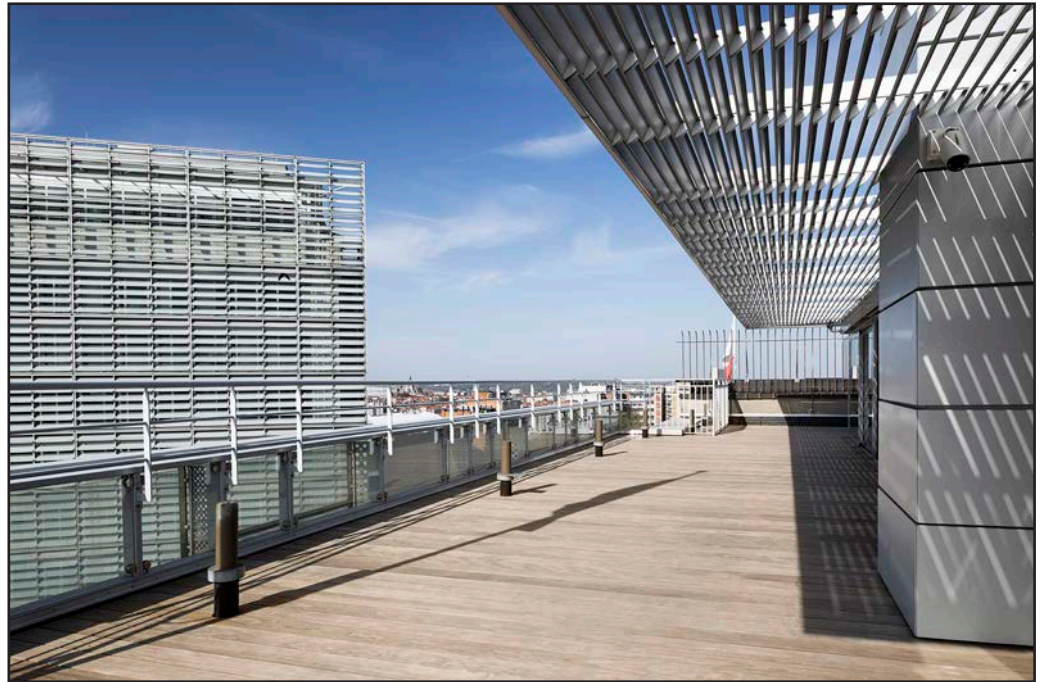
Kebony wood decking completes sustainable transformation at the Norwegian Embassy in Brussels

A RENOVATED roof terrace on the 10th floor of Norway House, located in Brussels's European Quarter and overlooking Rue Archimède and Le Berlaymont, the home of the European Commission, has undergone a sustainably inspired metamorphosis utilising Kebony Clear wood decking.

Carried out by property manager Epimmo on behalf of Statsbygg, the Norwegian government organization responsible for construction projects, the project atop the Embassy building illustrates a commitment to combining sustainability and beautiful design with modern construction techniques, in addition to reinforcing the Embassy's links with Norway's proud national heritage of healthy, wooden architecture.

Epimmo and Statsbygg selected Kebony Clear, a market leading, customisable timber decking product developed in Norway, for a functional, sustainable, and visually appealing finish to the roof terrace. A Norwegian technology company and a pioneer across the global construction industry for over 25 years, Kebony launched its second wood production facility in Flanders, Belgium, in 2018, furthering the application of its eco-friendly building products across the European market.

The patent-protected Kebony



technology transforms sustainable, FSC-certified softwoods, such as pine, into products with the aesthetic and mechanical characteristics to tropical hardwoods. The wood is infused with a bio-based liquid, activating a reaction in the wood cell walls to become 50% thicker, increasing the dimensional stability, durability, and hardness of the wood. This diverts the need for deforestation of the planet's vital rainforest sinks,

helping to reduce CO₂ emissions.

The resulting, dually modified™ Kebony wood has a significantly reduced water sensitivity, requires no maintenance, and does not splinter which makes it the ideal material for the new decking at Norway House, where the terrace will face 24/7 exposure to weathering conditions.

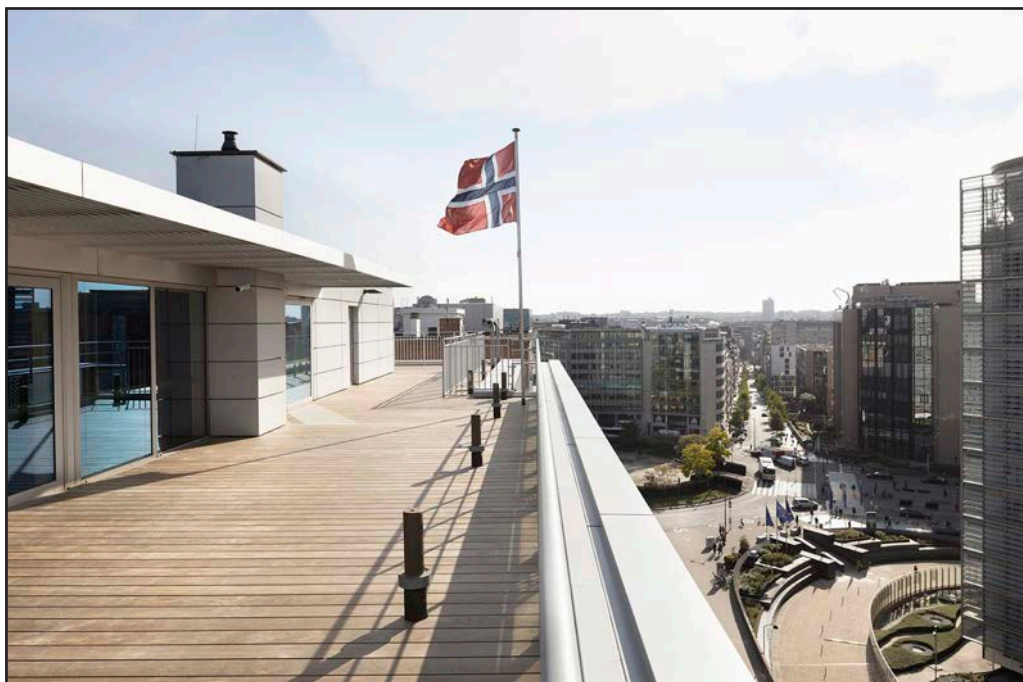
In addition to its sustainable credentials, durable qualities, and geographical connections,

Kebony Clear decking was also chosen for its significant lightness compared to tropical hardwoods, putting less stress and adding longevity to the roof structure. The aesthetic character of the wood also played a key role upon installation, offering a warm, welcoming appearance, that over time will acquire a natural silver-grey patina reminiscent of a Scandinavian pinewood.

Philippe Elewaut of Epimmo, manager for the Norway House project, commented: "The choice of Kebony wood was a logical one, given our emphasis on durability and quality. The new Norwegian Embassy terrace is a magnificent representation of Norwegian craft and innovation. The embassy's positive reaction confirms our choice for this high-quality, sustainable product."

Nina Landbø, international sales manager for Kebony, comments: "It is fantastic to see Kebony used in a sustainable renovation project that represents a meeting between our Norwegian origins and Belgium, the home to our second European factory, which has allowed for the growth of Kebony's innovative, eco-friendly technology to even further audiences across Europe and the world."

Kebony
www.kebony.com



CaberFloor performance cuts it for Cotswolds carpenter



A SPECIALIST carpenter, who works across much of the Cotswolds carrying out new-build and refurbishment work, has been making use of CaberFloor P5 and other panel products from the West Fraser range throughout his career.

Paul Doherty, who trades as Doherty Carpentry, is in big demand from Moreton-in-the-Marsh across to Stratford-upon-Avon — while also serving customers as far away as Coventry and working for bigger building contractors as well as individual property owners. Meanwhile, for many areas of his work, Paul chooses to purchase West Fraser products such as SterlingOSB Zero, CaberDek and CaberFloor P5 because of their broad performance benefits and competitive pricing.

Paul Doherty comments: "I get asked to undertake a lot of different types of contracts, from barn conversions and restoring old cottages, to working on new-build properties and erecting garden rooms for customers. In fact, I created an outdoor kitchen this summer for one client, though the work I did on an old stone-built property at Blockley — near Chipping Camden - pitching a new cut roof and creating new bedroom spaces, is more typical.

"The floors there were made up of 8 x 2 solid timbers, though I also install CaberFloor across metal web and other engineered timber joists. As long as you've got a good structure, and you get your first line of boards in straight, they run true, interlock well and provide a solid, squeak-free floor. Part of that is that I normally apply the CaberFix adhesive in the joints as well as across the top of the joists as we screw them in place. I've been using the West Fraser range for over 20 years now and have always been impressed with the accuracy, wide availability, and the competitive pricing."

CaberFloor P5 is one of the UK's most widely specified particleboard products, conforming to BS EN 312: part 5 and carrying BBA Agreement certification.

The 2,440 x 600 mm panels are available in thicknesses of 18 and 22 mm with tongue and groove edges along all four sides. They offer excellent stability as well as moisture resistance and deliver a sound reduction performance of 44 dB.

All West Fraser panel products produced in the UK are net carbon negative and manufactured in mills that have obtained the coveted environmental ISO 14001 accreditation. Responsibly sourced, the panels are FSC certified and created from locally grown timber, cutting embodied carbon from transportation.

West Fraser ● 01786 812 921 ● <https://uk.westfraser.com>

WASTE WOOD IS WOOD WASTED

Disposal of timber offcuts, shavings, chips and sawdust can be costly, yet these inevitable by-products of the woodworking industry can become a valuable commodity when converted into briquettes, or used directly as a fuel for heating.



- Economical and profitable
- Robust, reliable design
- High energy efficiency
- Advanced technology
- Reduced fire risk

With multiple machine sizes, power specifications and accessory options, the wide range of VOTECS briquetting presses and shredders has the capacity to deliver efficient solutions... whatever your waste reduction needs.



EXTRACTLY has teamed up with VOTECS – specialists in volume reduction technology and precision-engineered shredding and briquetting equipment for the woodworking industry.

Extractly
co.uk
extractly.co.uk

VOTECS
Volume Reduction Technology

01924 520462

The latest from SCM on beam saws



Automation and flexibility: the new Gabbiani GT cell with robot

In response to the ever-growing market need to produce both in batch 1 and in larger runs in a continuously flexible manner, SCM has developed a new, highly flexible process solution that involves the use of a Gabbiani GT2 single-blade panel saw with an articulated robot positioned on the ground at the front left of the machine.

The cell presented as part of the Smart&Human Factory concept for

the furniture industry production model, is believed to be the only exclusive integrated solution currently on the market that allows for the switch from automatic operation to manual processing with an operator in a few seconds. The transition between automatic mode with robot and manual mode is, indeed, immediate: the robot positions or removes the additional modules between the in-feeding tables, necessary for its correct operation.

In automatic mode with robot, the cell is able to operate without shift limits, relieving the operator from low-value work, and to handle even small finished pieces with the utmost ease thus allowing a large increase in productivity and quality to be achieved.

Manual functioning with operator, on the other hand, allows cutting in packs, guaranteeing an increase in productivity.

The cell is configured with all the options required for a complete process: automatic labelling, rotary table for pre-cuts management, automatic ejection and management of trims, automatic system that guarantees the cleanliness of the worktable, automatic blade-scorer alignment system and articulated robot to handle and palletize the finished panels and offcuts. The solution can also be fully integrated with horizontal storages.





Stop waste with the new Maestro Optimise optimiser software

Maestro optimise is the new cutting optimisation software for the extensive range of Gabbiani panel saws, whose function is to optimise the position and direction of the panel parts to be produced on the sheet, with a view to reducing material waste. The aim at the root of the Maestro optimise development is to achieve cutting excellence with minimum waste for production batches that are both large and small. Main functions include high calculation performance levels: the software allows you to simply establish the ideal solution in terms of times and costs thanks to the powerful algorithms capable of working on multi core systems. External integrability towards any ERP is achieved by importing the material storage and the cutting lists relating to the orders to be produced. Dual direction office/factory 4.0 integration: the software allows programs relating to orders for completion to be sent instantaneously to the machine and to read the machining parameters for punctual and correct planning.



SCM Group ● Tel 0115 977 0044
scmuk@scmgroup.com ● www.scmgroup.com/en_GB/

West Fraser's new guide for builders

FOR BUILDERS today, there is a plethora of different engineered wood panels to choose from when looking at a new project. West Fraser UK, which operates two factories in the UK, has produced a guide which makes the selection process simple and speedy.

With imports from Eastern Europe, China and South America muddying the water somewhat, the builder can be sure that West Fraser's products carry the necessary standards and quality marks for the UK and so comply with UK building specifications. In addition, the transport and environmental costs are minimised. The product portfolios comprise SterlingOSB Zero OSB3, SterlingOSB Zero T&G, CaberFloor P5, CaberDek, CaberShieldPlus, CaberMDF and the newest addition to the range, SterlingOSB Zero PrimedPlus, and all are net carbon negative while the SterlingOSB Zero range contains no formaldehyde.

SterlingOSB Zero — is a versatile panel product which is popular for its load-bearing credentials and fashionable visual appearance; be it for hoarding, café walls or SIPs.

Caberfloor — is the most popular P5 flooring range in the UK and comes with a choice of plain, protected, peelable or permanent finishes.

CaberDek and CaberShieldPlus — are BBA-approved and the flooring can be exposed to the elements for 60 days when used with CaberFix.

CaberMDF is believed to be the original and is claimed to be the best brand of MDF in the UK; it's over 50 years old and there are different grades to choose from depending on the project.

All products are available nationally in builders' merchants and distributors which are supported by West Fraser's technical teams.

West Fraser ● 01786 812921

<https://uk.westfraser.com/>

<https://uk.westfraser.com/housebuilders>

A BUILDER'S GUIDE TO CHOOSING THE RIGHT WOOD PANELS



You know you're only as good as the products you use and your reputation means everything to your business. Don't risk it by using sub-standard products.

Cheap imports from Eastern Europe, China and South America might seem appealing but do they carry all the necessary standards and quality marks? Do they comply with UK building specifications? Is it worth risking your business with untested products that have travelled thousands of miles round the world?

DON'T RISK YOUR REPUTATION WITH CHEAP IMPORTS!

Our range of engineered wood panels are all proudly made in the UK, supporting the UK economy with quality assured products that carry all the relevant accreditations and safety marks.

ONLY WORK WITH THE BEST!

- SterlingOSB Zero**
 - Structural and decorative use
 - Perfect for roofing, timber frame construction, flooring, dry lining, screening, outbuildings, security etc
- CaberFloor**
 - Suitable for both new builds and replacement floors
 - Perfect for domestic and commercial projects
- CaberMDF**
 - Economical alternative to hardwood
 - Perfect for interior joinery, paneling, mouldings, shop fitting, furniture etc







Bournemouth builder hails benefits of West Fraser panels

AN EXPERIENCED carpenter and builder based near Bournemouth, who has been involved in the construction of bespoke homes for two local developers, has taken to social media to demonstrate the speed and efficiency of installing West Fraser's CaberDek, as well as the manufacturer's SterlingOSB Zero.

Steve Mayes, who took a carpentry course in his late teens, has spent the last 15 years working on new-build and refurbishment projects, here and in New Zealand, and has now become a self-employed member of the erection team for the Glass Harbour Group and Ashhaus Construction.

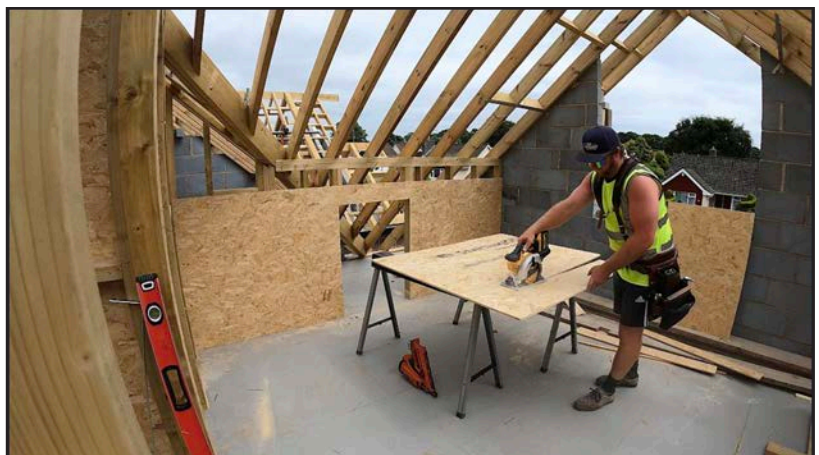
Amongst the properties currently under construction are two mirror image, three-bedroom detached houses where the stick-build frames are being sheathed with 11 mm SterlingOSB Zero to provide racking strength. Then at first floor level, Steve and his fellow chippies are laying 22 mm CaberDek across the floor joists prior to installing the wall plates.

Steve commented: "These new homes conform to high standards including energy performance and quality of finish. The SterlingOSB Zero is being used to conform to the structural engineer's requirements. Then to install the CaberDek across the joists, we are using the CaberFix glue and 50 mm ring shank nails to make sure there are no squeaks; the adhesive is applied to the tongue and groove joints as well. We particularly like the ruggedness of the boards which means you don't get any damage to the edges when you are pulling them up over the scaffolding, like you do with some makes, slowing things up. And once you get the first row fixed down, the consistent

size avoids the misalignment that creeps in with other decking, which can take a lot of work to correct. We were laying the first-floor decks for these homes in two to three days and getting a nice tight floor at the finish."

Supplied in this instance through the local branch of Travis Perkins, CaberDek panels measure 600 mm wide by 2,400 mm long. CaberDek is available in an easy to install and familiar T&G format, making it the ideal choice for housebuilders or sub-contractors to ensure rapid installation, ready to face the toughest of conditions on site.

West Fraser ● 01786 812 921 ● <https://uk.westfraser.com>



Rain, snow, ice? No problem for West Fraser's CaberDek flooring leading the pack for housebuilders

CABERDEK is one of West Fraser's flagship quality flooring products designed to ensure that, whatever weather befalls UK construction sites, work can continue cleanly and safely; this is especially important with today's tighter than ever timelines. It is made from the same moisture-resistant particleboard as the standard CaberFloor P5 and features a protective non-slip film applied to its upper surface.

In most new-build projects, the upper floors of a residential property are installed before the roof goes on, with the inevitable result that the new floor is left open to the elements for days or even weeks. CaberDek's protective film prevents rain and frost damage to the new floor surface as well as providing a safe non-slip working surface for the construction team. CaberDek can be left exposed, and remains BBA approved for up to 42 days without risk of damage, provided it is correctly installed with West Fraser's CaberFix adhesives. Even after the building is weather-tight, the floor surface remains protected while following trades, such as plastering and painting, come onto site. When work has finished, the protective film is simply peeled off to reveal a pristine particleboard floor ready for covering.

CaberDek comes in easy-to-handle 2,400 mm x 600 mm panels produced in thicknesses of 18 mm and 22 mm. Suitable for fixing to traditional sawn timber or engineered-timber joists, including metal-web joists, it can be fixed with nails, screws, and with West Fraser's own specially formulated adhesives.

CaberFix D3 is specially formulated to produce strong bonds between adjacent panels along the tongue-and-groove joint.

CaberFix Joint&Joist is a high-strength polymer adhesive which remains flexible after curing and is designed to fix a CaberDek floor to the supporting joists.

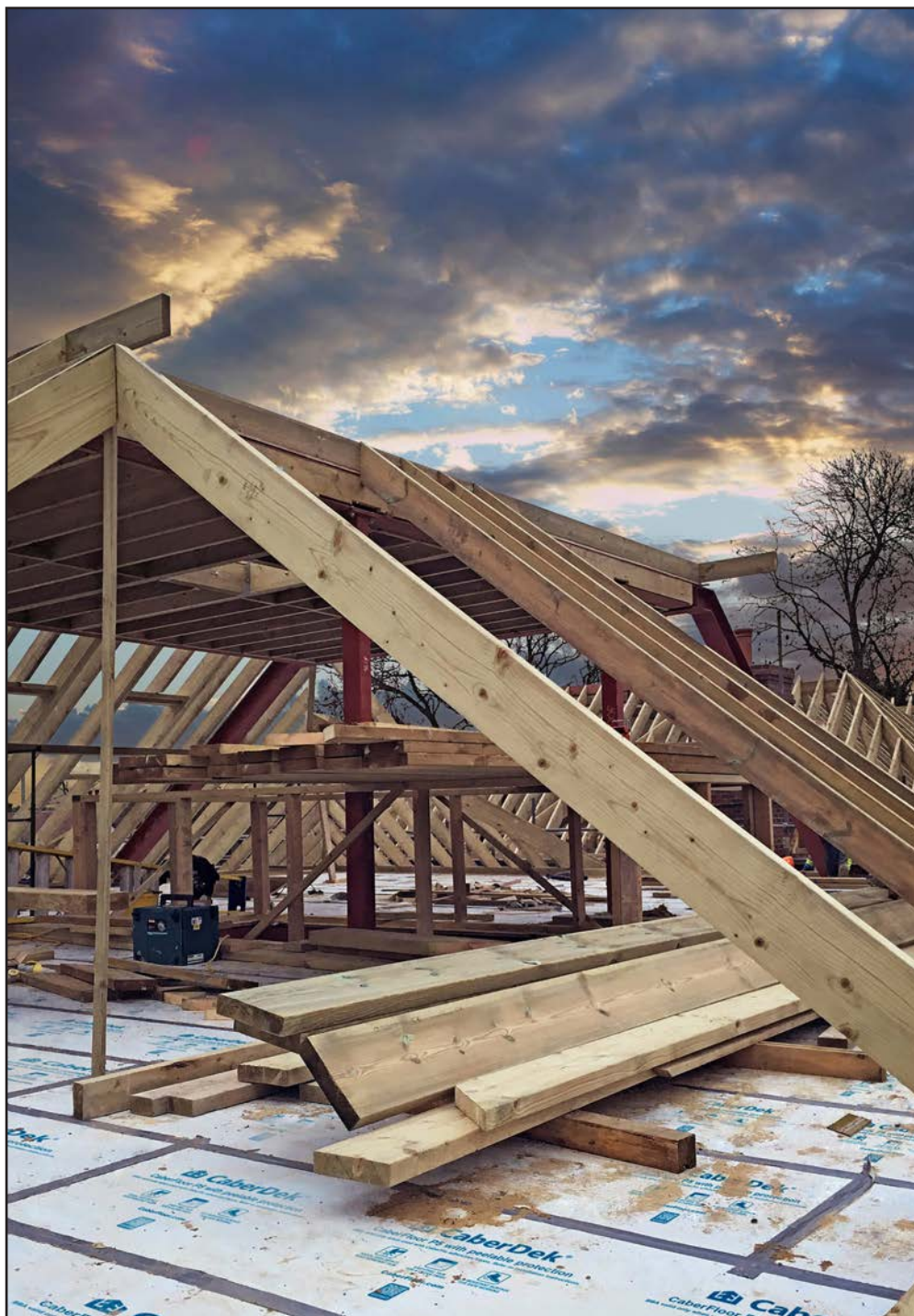
Replacing mechanical fixings, CaberFix Joint&Joist speeds up installation and produces a floor which is guaranteed free of squeaks and creaks. Its flexibility also contributes to noise attenuation, thus aiding in the floor's conformity with Part E of the Building Regulations governing the passage of noise.

CaberFix Tape seals the joints to prevent moisture degrading the T&G adhesives. For floors which are likely to be exposed to the elements during freezing conditions, West Fraser's special CaberFix X-Treme tape is recommended.

West Fraser

Tel 01786 812 921

<https://uk.westfraser.com/>



CaberDek can be left exposed and remains BBA approved for up to 42 days without risk of damage.

Designs with an extra dimension: Textured Surfaces from Decorative Panels Lamination

INSPIRING textures and hard proof that laminates can have depth — feel the difference with the Textured Surface collection from Decorative Panels Lamination and discover the beauty and endless possibilities of textured finishes from the dp-limitless range.

Do you think laminate is flat? You probably need to rethink that. DP Lamination's textured surfaces offer an attractive way to enhance the usability and aesthetic value of surfaces in your future projects. Textured surfaces not only enhance the decor itself, but also offer new possibilities in terms of aesthetics and functionality. They extend the possible applications of the surface, for example, creating a warm and cosy feel to a space by enhancing its functionality and attractiveness.

Decorative Panels Lamination offers a great collection of creative and functional textured polymer surfaces, available in quantities from as little as just one board!

These surfaces can be worked easily with common woodworking tools and machinery and can be recoated with acrylic, polyurethane and water based varnishes.

The textured finishes offered by Decorative Panels Lamination are a collection of white textured polymers from Italian manufacturer Voice Tec: defined by Voice Tec as the perfect combination of novelty and elegance, creativity and functionality. Textured finishes can be incorporated into any furnishing solution, guaranteeing that each project is unique, exclusive and personal.

The panels offer very high technical characteristics and a great resistance to weather and UV rays. The surface can be overpainted using polyurethane, acrylic and water-based paints.

The impact of the panels is enhanced by their sensory dimension, unique design and customisation. They are easy to work with multiple industrial and handcrafted procedures (cutting, laser cutting, edge banding, folding, carving, milling...).

Textured surfaces should never be underestimated in interior design, as they are perceived by two senses — sight and touch and harmonise perfectly with the character of an interior. Don't be afraid to use unusual surfaces. Don't limit yourself, as different textures enhance the visual perception of a room. Interesting textures can make a big difference to the way a room is perceived.

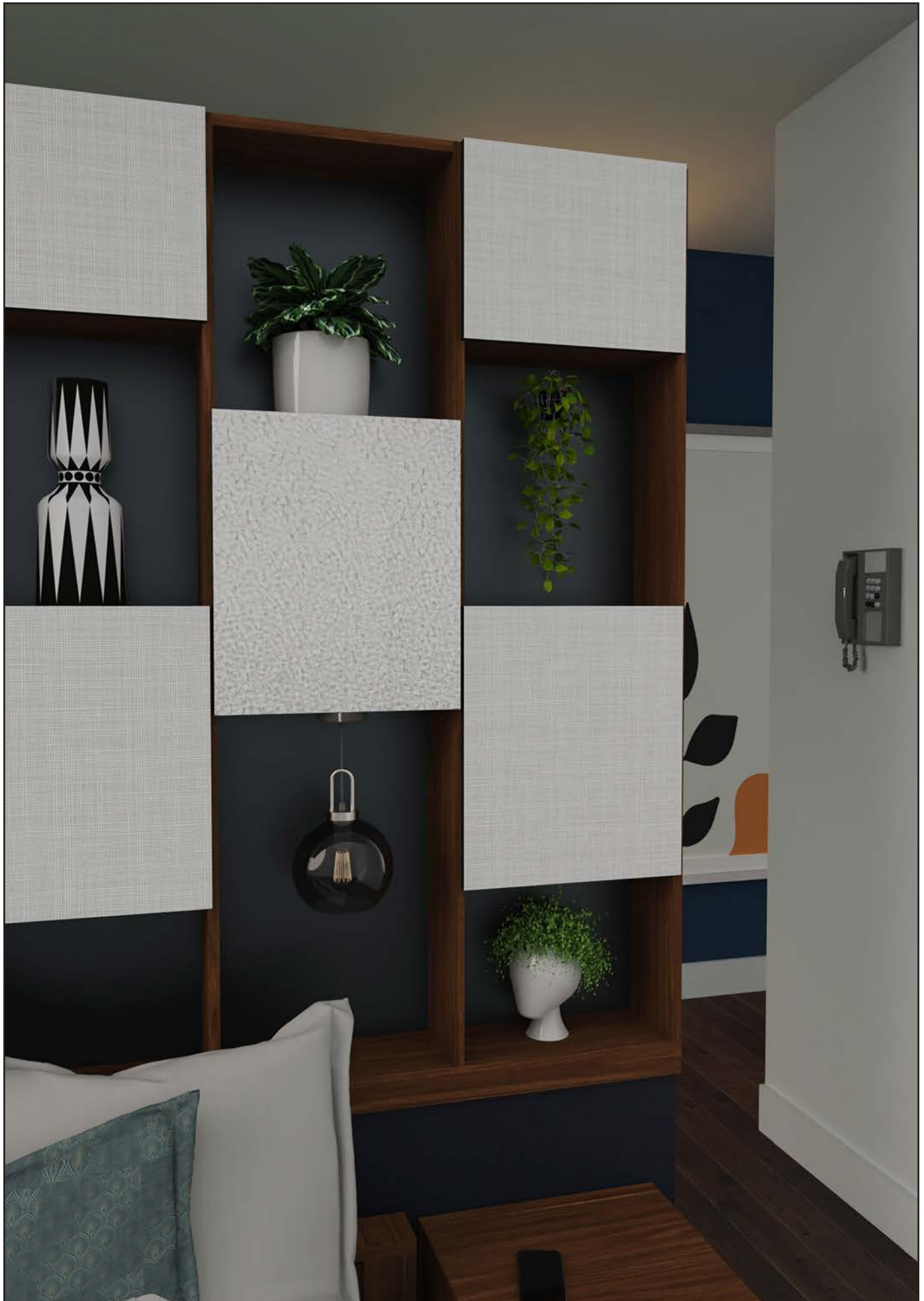
Add dynamism and character to your interior with textured surfaces offered by Decorative Panels Lamination, available in quantities from as little as one board.

Available board sizes: 2,800 mm x 1,300 mm, available substrates: 15 mm and 18 mm MDF.

Decorative Panels Lamination

Tel 01484 658341 ● www.decorativepanels.co.uk







GABBIANI GT2 WITH ROBOT FLEXIBLE & PRODUCTIVE MACHINING

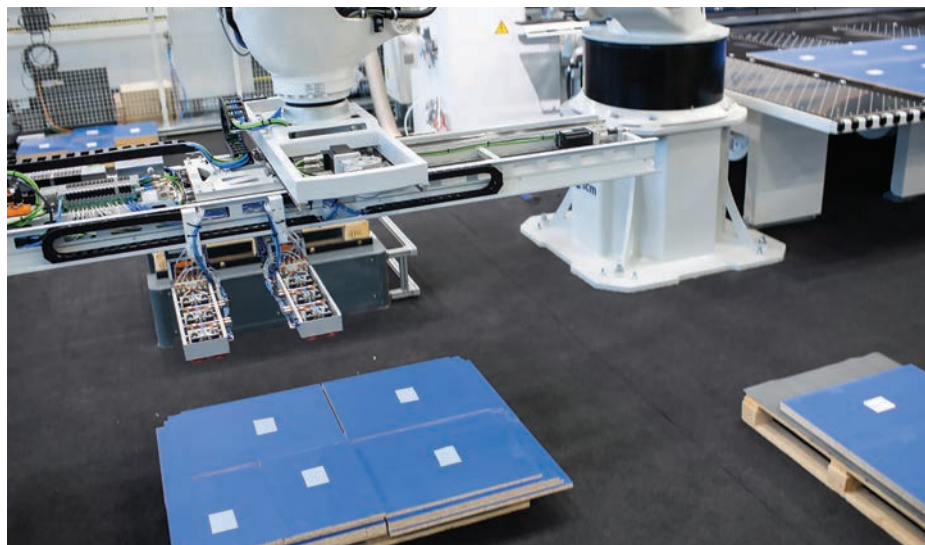
In response to the ever-growing market need to produce both in batch 1 and in larger runs in a continuously flexible manner, SCM has developed this **new process solution** that involves the use of a **gabbiani gt2** single-blade panel saw with an **anthropomorphic robot** positioned on the floor at the front left of the machine. This is the only integrated solution currently on the market that allows switching between automatic and manual processing with an operator in a matter of seconds (patent pending).

The transition between **automatic mode with robot** and manual mode is in fact immediate and automatic: the robot places or removes the additional modules between the in-feeding tables, necessary for its correct operation.

In **automatic mode with robot**, the cell allows to operate without shift limits, relieving the operator from low-value-added activities, and to handle even small finished parts with the utmost ease, thus allowing to achieve a large increase in productivity and quality.

Manual operation with an operator, allows stack cutting, ensuring increased productivity.

The solution is also fully integrable with horizontal warehouses like scm FLEXSTORE.



DISCOVER MORE



SCM UK
Tel. +44(0)115 9770044
scmuk@scmgroup.com
www.scmwood.com

 **scm**
woodworking technology

is more